

THE

VOICE OF SPORT

£3.00



ROCHDALE v **SWINDON TOWN** SkyBet League 1 • Tuesday 14th April 2015 • Kick-Off 7.45pm



Official
Club Sponsor



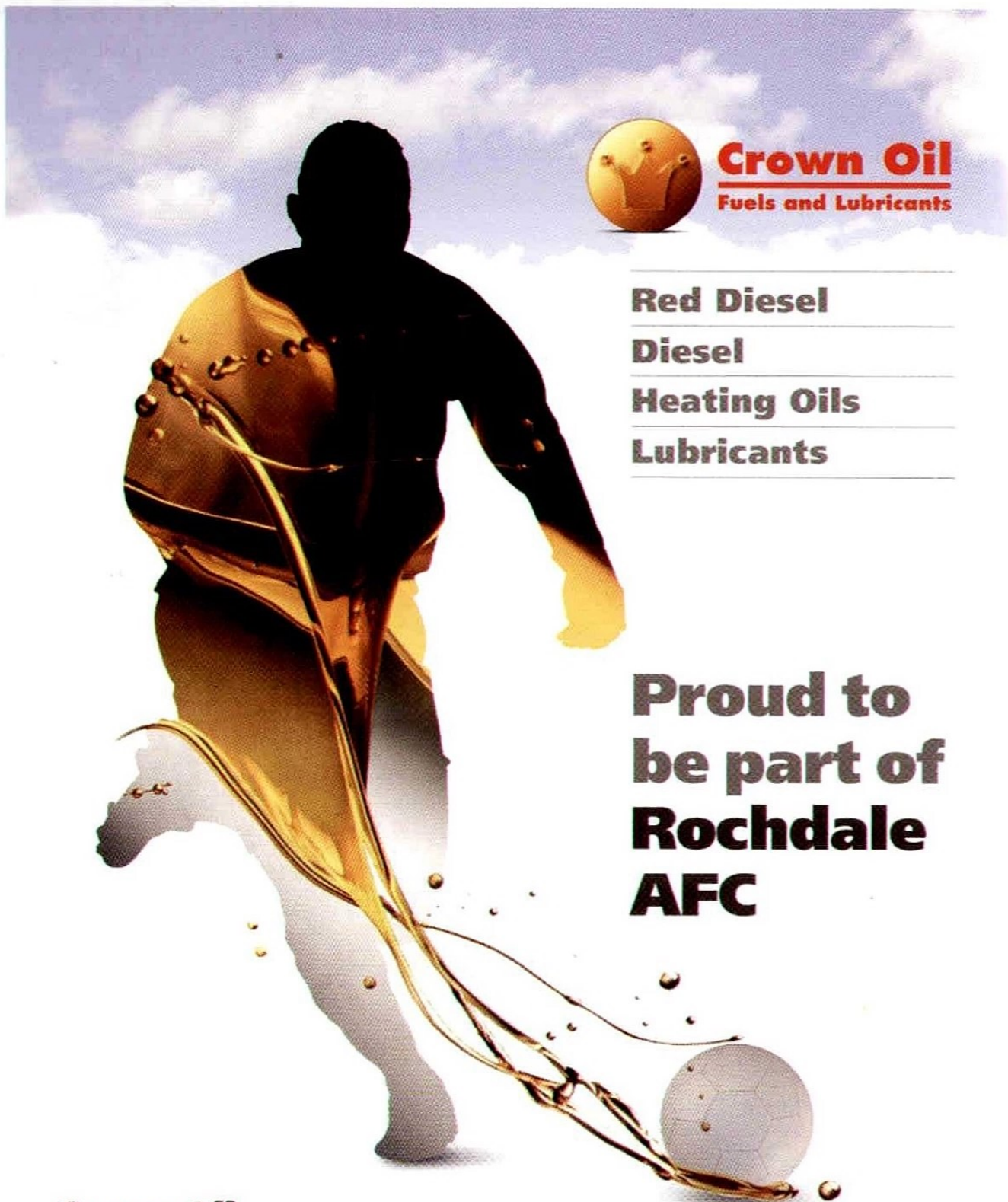
Official Kit
Supplier



Official
Programme Sponsor



Official
Match Sponsor



Crown Oil
Fuels and Lubricants

Red Diesel

Diesel

Heating Oils

Lubricants


**Proud to
be part of
Rochdale
AFC**

Crown Oil

T: 0845 313 0845 **E:** sales@crownoil.co.uk


The Oil Centre, Bury New Road, Heap Bridge, Bury BL9 7HY

www.crownoil.co.uk



SHAKE IT SUPPLEMENTS
WWW.SHAKEITSUPPLEMENTS.CO.UK

LEADING SUPPLIER OF
SPORTS SUPPLEMENTS & NUTRITION



10% OFF EVERYTHING ONLINE WITH THE
ROCHDALEAFC DISCOUNT CODE

Keith Hill

Good evening and welcome to Spotland for tonight's League One fixture against Swindon Town.

I'd like to extend that warm welcome to Mark Cooper, his staff, players and everyone connected with tonight's visitors, who have made the long trip from Wiltshire.

We go into tonight's game following last Monday's win over Port Vale and Saturday's 1-1 draw with Doncaster Rovers. I'm really pleased with both results.

The celebrations we all witnessed on Easter Monday when Calvin Andrew scored his stoppage time winner were absolutely superb.

They are the type of emotions that you're striving to hit every matchday and for me they encapsulated the Team Rochdale identity which has been re-built since I've been back at the club.

It was an excellent three points and I'm pleased we followed them up with an important point at the Keepmoat Stadium at the weekend.

We played well against Doncaster, especially in the second half, and I was delighted with the way we

rallied after going a goal behind. We showed great character and spirit and I was extremely pleased that we dominated possession and enforced our game on the opposition.

The results keep the play-off dream alive going into the last five games of the season. Who knows what's going to happen, but we'll try to be successful.

When you look at our remaining fixtures, starting with tonight's game against Swindon, then it's going to be difficult, but we're looking forward to the challenges that lie ahead.

There's no pressure on the players because the pressures have been alleviated with the successes we've had so far this season. However, want to build on it as we're still in a position where we can reach the play-offs, so why not go for it?

See you back here next Tuesday night when we welcome Leyton Orient to Spotland.

**Enjoy the game
Keith**

CLUB DIRECTORY

Rochdale AFC
Spotland Stadium
Rochdale
Lancs
OL11 5DS
Tel: 0844 826 1907
Fax: 01706 648466

COMMERCIAL DEPARTMENT
Tel: 0844 826 1907 (option 3)
www.rochdaleafc.co.uk

PRESIDENT: Andrew Kilpatrick
CHAIRMAN: Chris Dunphy

DIRECTORS: Jim Marsh, Andrew Kelly, Paul Hazlehurst, Bill Goodwin, Graham Rawlinson

LIFE VICE-PRESIDENTS: Rod Brierley, Len Hilton, David Kilpatrick, Graham Morris, Mrs Norma Jenkins

ASSOCIATE DIRECTOR: John Smallwood

CHIEF EXECUTIVE/SECRETARY: Colin Garlick

ADMINISTRATION MANAGER/ASSISTANT SECRETARY: Gina Buckley

ACCOUNTS MANAGER: Jeannette Bond

ADMINISTRATION ASSISTANT: Jan Marsh

MANAGER: Keith Hill

ASSISTANT MANAGER: Chris Beech

PHYSIOTHERAPIST: Andy Thorpe

KIT MANAGER: Jack Northover

GOALKEEPING COACH: Steve Collis

FIRST TEAM COACH: Brian Barry-Murphy

PERFORMANCE ANALYST: Dan Fradley

FITNESS & CONDITIONING COACH: Kevin Gibbins

CHIEF SCOUT: Larry Redmond

ACADEMY MANAGER: Tony Ellis

ACADEMY PDP LEAD COACH: Richard Ashcroft

ACADEMY FP LEAD COACH: Anthony Thompson

ACADEMY YDP LEAD COACH: Chris Brown

ACADEMY LEAD SPORTS THERAPIST: Gary Thompson

ACADEMY SECRETARY: Sarah Ashton

ACADEMY GOALKEEPING COACH: Ryan Ball

ACADEMY LEAD SPORTS SCIENTISTS: TBC

SAFEGUARDING & EDUCATION OFFICER: Alistair Linden

ACADEMY HEAD OF RECRUITMENT: Ronnie Cusick

SALES & MARKETING MANAGER:

Iain Johnstone, Frances Fielding

RETAIL & PROJECTS MANAGER: Stuart Ashworth

MEDIA & MARKETING OFFICER: Leighanne Coyle

LOTTERIES MANAGER: Peter Woodhouse

LOTTERIES ASSISTANTS: David Lord, Alasdair Orr, Phil Worthington

PROGRAMME EDITOR: Mark Wilbraham

PUBLIC ADDRESS ANNOUNCER: Dave Sweetmore

FOOTBALL IN THE COMMUNITY OFFICER: Keith Hicks

STADIUM SUPERVISOR: Paul Swarbrick

SAFETY OFFICER: Ian Weller

BAR MANAGERESS: Sue Butterworth

STADIUM MAINTENANCE: Ryan Swarbrick, Eric Thickett, Cheri Smith

GROUNDSMEN: Rob Bennett, Drew Duffy

CLUB DOCTORS:

Dr Steve Derbyshire, BSc, MB, ChB, FRCS, FCEM, Dr Wes Tensel: MA (Cantab), MB, B.Chir (Hons), MRCCGP
Dr Michael Burke, BSc (Hons), MBChB, PG Cert (SEM)

EDITORIAL

I wonder how many people inside Spotland tonight are members of 'The 92 Club'?

For those who aren't aware of this club, let me explain.

'The 92 Club' was an organisation set-up in 1978 which football fans can join once they have seen a game on all 92 Football League grounds.

However, it can't just be any old game; it must be a competitive first team fixture or even an international match.

There are many other rules and regulations which govern whether a game you attend can be counted, but the bottom line is that on the day your 92nd ground is visited, you must have visited the current grounds of the other 91 League clubs.

This has become an increasingly difficult challenge over the years, as promotion from non-league football and new ground developments mean the list of 92 changes every 12 months.

If you're an older Swindon supporter reading this Editorial, you have had a great chance to accomplish the feat over the last 21 years.

The Robins played in the Premier League in 1993/94 and have since featured in all three divisions of the Football League, giving their travelling fans not only a chance to visit all 92 grounds, but potentially doing it with their own club!

There have been a small number of players who appeared at all 92 grounds, while Jim Smith, a prominent manager with the likes of Oxford and QPR in the 1980s, managed on every ground.

This all came to mind recently when I read that referee Andy D'Urso had completed his own tour of 'The 92'.

At the start of this season he needed Fleetwood, Morecambe and Newport to complete the set and the Football League kindly accommodated his request.

Based in Essex, Mr D'Urso has done well to referee at every ground, especially those at northern outposts like Spotland, but he agreed to reduced travelling expenses as part of the deal.

He has actually been to Spotland twice – in April 2009 for a televised game against Darlington and for last season's crucial 2-1 win over Accrington.

His other 'ticks' have been built up since he joined the league list in 1994 and took charge of Fulham v Walsall in his first game in the middle.

A fortnight later he refereed Dale's 1-1 draw at Gillingham and two grounds were crossed off within a fortnight of him starting.

Andy also refereed in the Premier League for a time, which allowed him to officiate at the homes of the country's bigger clubs.

He's actually the second referee to achieve this feat, following Gilbert Napthine who was on the league list in the 1970s and 1980s.

However, Mr Napthine was from Loughborough, a central location, which made his appointments more natural than contrived.

On a personal level, I've been to 80 grounds out of the current 92, although if we're using 'The 92 Club' rules, I'll have to remove Nottingham Forest from that list as I went to the City Ground for an FA Youth Cup tie.

I did do Brighton's and Swansea's old grounds, but have still to visit their new homes.

That leaves me with Arsenal, Chelsea, Ipswich, Middlesbrough, Millwall, Newcastle, Norwich, Tottenham, Watford and WBA.

At least that list will quickly disappear when Dale get into the Premier League!

Mark Wilbraham
(Editor)



Official Website: www.rochdaleafc.co.uk

Twitter: @officiallydale

Facebook: Officially Rochdale

You Tube: OfficialRochdaleAFC



SPOTLAND SCENE

JACK HAMMILL



The club was saddened to hear recently of the passing of veteran sports journalist, Jack Hammill.

Mr Hammill, who passed away at the age of 94, was a familiar figure at

Spotland after covering Rochdale AFC during a 60-year career.

Born in Rochdale in 1920, his long career, which took in 35 Dale managers, hundreds of players and thousands of matches, began with him covering the reserve team for the Rochdale Observer. Remarkably, though, Jack never actually wrote down a word during a match!

The only words in his 'match' diaries were to remind him of who wanted reports, when they wanted them and just what they required.

In the peak of his career it was a long list for each home game and Jack said: "I was so busy ringing people with running reports, goal-flashes and the like it was almost impossible to write things down at the same time. But I could remember what had happened on the pitch and a report was rarely wrong."

Jack seemed to possess a photographic memory which was probably something to do with his army service in the Intelligence Corps and a four-year spell playing 'I Spy' in the Middle East.

By then he had already cut his teeth on Dale reporting, albeit the reserve team, under his Rochdale Observer pen-name of 'Watchman'.

Following his spell treading the Persian carpets, he returned to the Observer, but found himself writing church reports and being used like an office boy.

That wasn't for him and when he was told he wouldn't be paid any more than £6 a week, Jack decided enough was enough.

He bought the local freelance business for £240 and a legend was born among copy-typists and sports editors nationwide.

Such was the respect for him, one Dale manager, Jack Marshall, even helped out with reports.

Jack said: "One paper wanted me to cover Dale's away games. I didn't really fancy going to them, so I arranged for Jack to ring me with a report after each away match. I was on pins until he rang, but he never failed me."

Marshall, Tony Collins and Vic Halom were well liked by Jack, who added: "I got on all right with most who have been managers at Spotland, but there were some who could be funny with you. The main thing was I never fell out with any of them. I suppose it was all down to how you approached them."

Upon his retirement in 2007, Jack devoted his time to producing more of the water-colour paintings for which he became well-known.

His daughter, Anne, said: "He was a lovely man and very generous - whenever there was a good cause he would always support it by painting pictures and selling them."

"He did work for the Royal Manchester Children's Hospital and a children's AIDS charity in Africa."

"He loved literature, whiskey and his pipe - and he always had a great sense of humour."

Jack also provided paintings for the club and some are still on display in the Boardroom at Spotland.

WAYNE'S WORLD

Former Dale defender Wayne Thomas recently added another event to what has been a very interesting campaign.

The 35-year-old, who has spent most of this season with Worcester City, has left the Midlands outfit to become an academy coach with MLS Eastern Conference club, New York Red Bulls.

Back in October, Thomas was a substitute for Worcester as they faced Harrogate in a Conference North fixture.

Thirty seconds into the game, City's goalkeeper was injured, but they didn't have a substitute 'keeper on the bench.

Wayne volunteered to don the gloves and somehow managed to keep a clean sheet as his team won the game 2-0.

Fans may recall Thomas making just a couple of appearances for Dale at the end of the 2012/13 season.



PENALTY PAIRS

Ian Henderson's brace of penalties against Crewe last month was the first time a Dale player had scored twice from the spot in the same game for almost three years.

The last player to achieve the feat was Jason Kennedy, who converted two penalties in Dale's 4-3 home defeat to Keith Hill's Barnsley in the Capital One Cup in August 2012.

All told, this landmark has happened only nine times in Dale's matches:

Mar 15	v Crewe	Ian Henderson
Aug 12	v Barnsley (COC)	Jason Kennedy
Mar 09	v Bradford	Adam Le Fondre
Aug 02	v Wrexham (a)	Paul Simpson
Nov 85	v Wrexham	Steve Taylor
May 85	v Scunthorpe	Barry Diamond
Sep 69	v Bournemouth (a)	Reg Jenkins
Aug 68	v Scunthorpe	Reg Jenkins
Dec 21	v Walsall	Harry Dennison

In addition, Mark Payne and Andy Flounders both scored from the spot in the 4-4 draw at Colchester in November 1992.



MATCH REFEREE NIGEL MILLER

(County Durham)

JOINED LEAGUE LIST: 2003

FIRST LEAGUE GAME: Huddersfield T v Cambridge U, 9/8/03

DALE GAMES:

20/12/03 v Boston U (h), W 1-0
8/10/04 v Yeovil T (h), W 2-1
19/11/05 v Chester C (h), D 2-2
21/4/07 v Macclesfield T (h), W 5-0
11/3/08 v Stockport Co (a), L 0-2
7/10/08 v Carlisle U (h, JPT), D 2-2
24/11/09 v Notts Co (h), W 2-1
21/8/10 v Colchester U (h), L 1-2
8/3/11 v Huddersfield T (a), L 1-2
6/8/11 v Sheffield Wed (a), L 0-2
20/3/12 v Tranmere R (h), L 0-2
13/10/12 v Morecambe (h), L 1-2
29/3/13 v Aldershot T (h), D 1-1
25/3/14 v Portsmouth (h), W 3-0
30/8/14 v Bradford C (h), L 0-2

LAST SWINDON GAME:

17/1/15 v Chesterfield (h), W 3-1

THIS SEASON:

Games 30
Yellow Cards 77
Red Cards 1



BUILDING THE FOUNDATION OF FOOTBALL

Since 2000 the Football Foundation and its funders have invested in £1 billion worth of grassroots projects. This is providing quality playing surfaces and changing rooms for communities across the country – helping to increase participation and supporting player development.

@FootballFoundtn
 Youtube.com/Footballfndn
 flickr.com/footballfoundation
 linkedIn.com/football-foundation
www.footballfoundation.org.uk





Rochdale AFC
your club
your support
your call...

"Save money on your mobile and land line calls and help support Rochdale AFC at the same time.

We've partnered with Crown Telecom to bring you great savings and every call you make will help us invest in new facilities and players."

Keith Hill



Save money on your business calls and help support Rochdale AFC call:



CROWN
Telecom Solutions Limited

0800 3800 442
www.crowntelecom.co.uk

DALE HISTORY

When Ian Henderson scored Dale's second goal at home to Colchester last month, he achieved something that has only happened twice before in the last 35 years.

Hendo's effort meant he had scored for both sides in that particular fixture at home and away.

He netted for United at Spotland in August 2010 and October 2011, as well as at the Weston Homes Community Stadium in April 2011.

Earlier this season, Henderson squeezed home a penalty in Dale's 4-1 win in Essex, before completing the quadruple last month.

The only other Dale players to achieve this unique foursome in since the early-1980s are Barry Wellings and Grant Holt.

GRANT HOLT

Rochdale & Shrewsbury Town

6th Aug 2005

Scored for Rochdale at Shrewsbury

26th Nov 2005

Scored for Rochdale at Rochdale

26th Dec 2008

Scored for Shrewsbury at Rochdale

13th Apr 2009

Scored for Shrewsbury at Shrewsbury

Four years separated Holt's first and last goals in this feat, but they are all memorable for different reasons.

At Gay Meadow on the opening day of the 2005/06 season, he squeezed a shot past a young Joe Hart to give Dale a 1-0 win.

Three months later, Holt netted twice when The Shrews visited Spotland in the remarkable game Dale won 4-3 after trailing 3-1 at half-time.

After a spell with Nottingham Forest, Grant moved to Shrewsbury for the 2008/09 campaign and enjoyed a stunning season in which he scored 28 goals in all competitions.

Among those was a fine individual effort against Dale at Spotland on Boxing Day, although it was only a consolation as Town lost 2-1.

The following Easter Monday he was on target at the New Meadow, but Dale fought back with a magnificent Chris Dagnall strike earning a 1-1 draw.



BARRY WELLINGS

Rochdale & York City

6th Oct 1979

Scored for York at York

14th Mar 1980

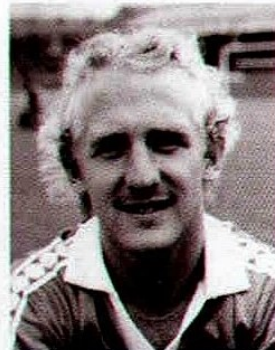
Scored for York at Rochdale

27th Dec 1980

Scored for Rochdale at York

12th April 1982

Scored for Rochdale at Rochdale



Wellings is a player synonymous with Rochdale sides of the early-1980s, but he first came to the notice of Dale fans in his days with York.

At Bootham Crescent in October 1979, Wellings hit City's third goal as they came from 2-1 down at the interval to inflict a 3-2 defeat on Dale.

Five months later at Spotland, Barry gave The Minstermen the lead in what became a 2-0 victory. It was no surprise that Dale had 'O' next to their name as they failed to score in 14 out of 15 league games from mid-February to late-April.

Peter Madden brought Wellings to Spotland during the summer of 1980 and at the end of December he scored for Dale in a 2-1 win at York.

He then had to wait until April 1982 to complete the four-game feat with a penalty as The Minstermen were beaten 2-0 at Spotland.

Several other players have come close to scoring for both teams in the same fixture since the early-1980s.

NICKY ADAMS

Rochdale & Bury

6th Oct 2007

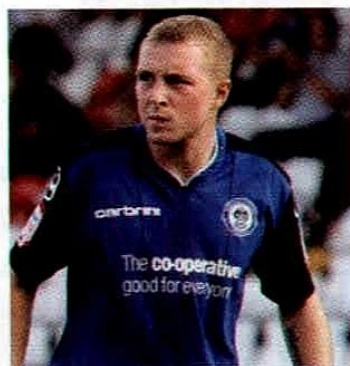
Scored in
Rochdale 1 BURY 2

26th Apr 2008

Scored in
BURY 1 Rochdale 1

10th Sep 2011

Scored in
Bury 2 ROCHDALE 4



ADAM LE FONDRE

Rochdale & Rotherham United

8th Dec 2007

Scored in
Rotherham 2 ROCHDALE 4

14th Mar 2009

Scored in
ROCHDALE 1 Rotherham 2

23rd Aug 2009

Scored in
ROTHERHAM 2 Rochdale 1



ANDY BISHOP

Rochdale & Bury

13th Dec 2003

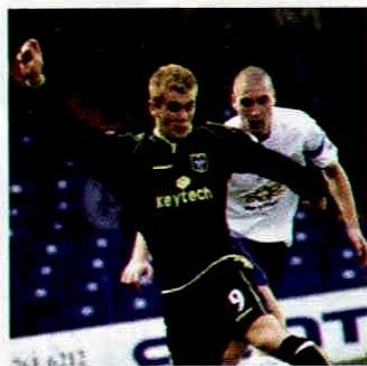
Scored in
Bury 1 ROCHDALE 2

4th Nov 2006

Scored in
Rochdale 1 BURY 3

10th Sep 2011

Scored in
BURY 2 Rochdale 4



STEVE WHITEHALL

Rochdale & Mansfield Town

29th Oct 1994

Scored in
ROCHDALE 3 Mansfield 3

7th Mar 1995

Scored in
Mansfield 1 ROCHDALE 1

16th Apr 1996

Scored in
Mansfield 2 ROCHDALE 2

3rd Jan 1998

Scored in
MANSFIELD 3 Rochdale 0



ANDY FLOUNDERS

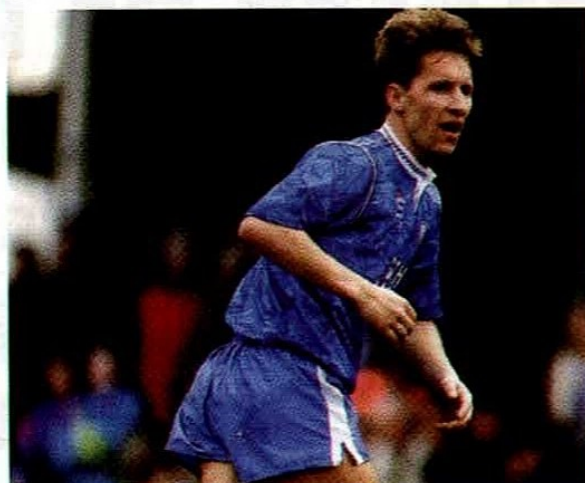
Rochdale & Scunthorpe United

9th May 1987 Scored in SCUNTHORPE 2 Rochdale 0

6th Feb 1988 Scored in Rochdale 2 SCUNTHORPE 1

10th Nov 1990 Scored in SCUNTHORPE 2 Rochdale 1

26th Dec 1992 Scored in ROCHDALE 2 Scunthorpe 0



LYNDON SIMMONDS

Rochdale & Swansea City

1st Nov 1986

Scored in
SWANSEA 1 Rochdale 0

29th Apr 1987

Scored in
ROCHDALE 2 Swansea 0

7th Nov 1987

Scored in
ROCHDALE 2 Swansea 3

2nd Apr 1988

Scored in
Swansea 0 ROCHDALE 3



STEVE JOHNSON

Rochdale & Bury

21st Mar 1981

Scored in
BURY 3 Rochdale 1

29th Aug 1981

Scored in
BURY 3 Rochdale 0

23rd Jan 1982

Scored in
Rochdale 1 BURY 1

26th Dec 1983

Scored in
Bury 3 ROCHDALE 1





DALE SUPPORTERS
T R U S T

ROCHDALE AFC

PLAYER OF THE SEASON AWARDS EVENING

Saturday 25th April 2015 • Dale Bar

**Tickets are on sale NOW at the Ticket Office
ONLY £3**





Win £250,000 for your club in the time it takes Jim to put on his tie



NOW OPEN

**WIN £250K FOR YOUR CLUB
AND £5K FOR YOURSELF**

ARE YOU IN?

skybet.com/win

18+. T&C'S APPLY

THIS SEASON WE'RE SUPPORTING YOUR

2014 - 2015

LITTLE LEGENDS

Capital One



So far we've given away thousands of footballs, let kids go to matches for £1 and put on the greatest kickabout of the season, starring two thousand footballs, Ian Wright and a helicopter.

Find out what we're doing next.

GO TO CAPITALONE.CO.UK/LEGENDS



Capital One

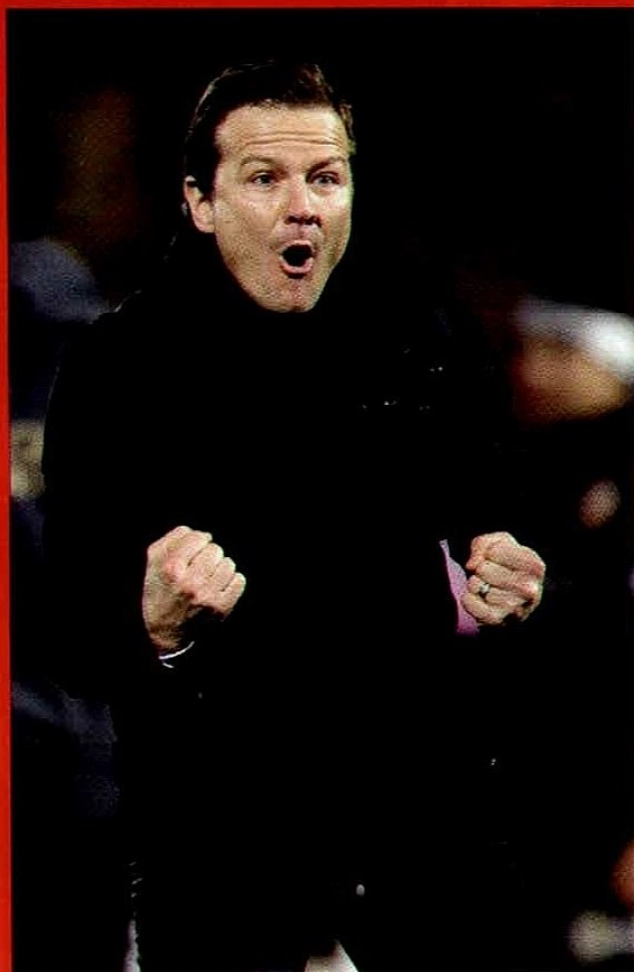


SWINDON TOWN

TWO 3-0 DEFEATS OVER THE EASTER WEEKEND APPEARED TO HAVE CONSIGNED SWINDON TO COMPETING IN THE END-OF-SEASON PLAY-OFFS.

THE HEAVY LOSSES TO RIVALS MK DONS AND BRISTOL CITY MEANT OUR VISITORS WENT INTO SATURDAY'S HOME FIXTURE AGAINST PETERBOROUGH TEN POINTS BEHIND SECOND-PLACED PRESTON, ALBEIT WITH A GAME IN HAND.

SWINDON TOWN



MANAGER **MARK COOPER**

Born: Wakefield, 18th December 1968

Playing Career (1987-2009): (League Only) Bristol C., Exeter, Southend (loan), Birmingham, Fulham, Huddersfield (loan), Wycombe, Hartlepool, Macclesfield (loan), Leyton Orient

League Apps/Goals: 248/52

Management Career (2004-date): Tamworth, Kettering, Peterborough, Darlington, AFC Telford, Swindon

Managerial Games/Wins: 470/197 (41.9%)

Mark replaced Kevin MacDonald at the County Ground in August 2013 having worked as his assistant manager for the previous six months.

The 46-year-old's only managerial experience in the Football League up to then was 13 games in charge at Peterborough during the 2009/10 campaign.

However, Mr Cooper had managed extensively in non-league football, with successful spells at Tamworth and Kettering being followed by a year in charge at Darlington, where he won the FA Trophy at Wembley.

The son of former Leeds and England full-back Terry Cooper, Mark was a midfielder in his playing days.

GOALKEEPERS

1 WES FODERINGHAM

Wes came through the ranks with Fulham's Academy before moving to Crystal Palace in July 2010. He initially joined Swindon on loan in October 2011 and a string of fine performances saw him earn a permanent contract early in the New Year. The 24-year-old has now made over 180 appearances for the club in all competitions.

25 TYRELL BELFORD

Tyrell signed a deal with Town in the summer of 2013 following his release from Liverpool's Academy. Aged 20, he has played mainly in the Johnstone's Paint Trophy for tonight's visitors.

37 CAMERON BELFORD

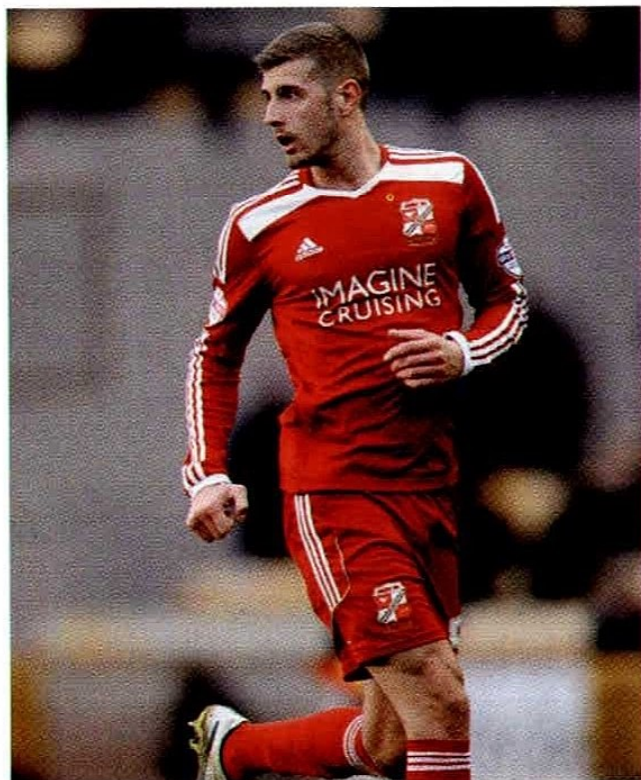
Cameron has recently penned a short-term contract with Swindon until the end of the season. The 26-year-old will be familiar to Dale fans from his time at Bury, but he has also appeared for Southend and Accrington in the Football League and was with non-league Tamworth last term.

Wes Foderingham



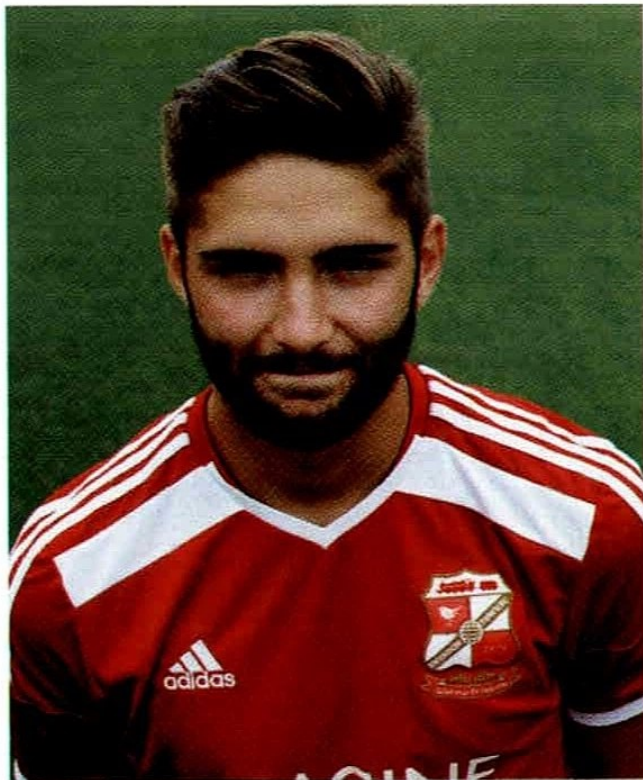


DEFENDERS



5 JACK STEPHENS

Jack is in his second loan spell at The County Ground, having impressed in Wiltshire towards the end of the 2013/14 campaign. The 21-year-old re-joined our visitors in September from Southampton.



6 JORDAN TURNBULL

Like Jack Stephens, Jordan also returned to Swindon on a season-long loan from Southampton last summer. The 20-year-old was on the books of Town's Academy as a youngster before being snapped up by The Saints.

2 NATHAN THOMPSON

A product of Swindon's Academy, Nathan made his breakthrough into the first team during the 2012/13 campaign. The 24-year-old, who recently made his 100th league appearance for the club, has skippered Town this season, although he has received three red cards since August!

3 NATHAN BYRNE

Nathan signed a two-year deal with Town in the summer of 2013 after a successful loan spell the previous campaign. The 22-year-old was a Tottenham player at the time and although he never made it into Spurs' first team, he has also played on loan at Brentford, Bournemouth and Crawley.

15 HARRY TOFFOLO

A former FA Youth Cup winner with Norwich, Harry (19) is currently on loan at The County Ground from The Canaries, a deal which keeps him in Wiltshire until the end of the season.

23 JACK BARTHAM

Jack moved to Swindon from Tottenham in June 2013, having previously played with Spurs' youth team.

29 RAPHAEL BRANCO

Formerly with the academy at Brighton, Raphael is a Brazilian centre-half who penned a deal with tonight's visitors last summer after a successful trial period. The 24-year-old has been a regular in defence since then and has even chipped-in with a handful of goals.

36 SAM RICKETTS

Sam recently joined Swindon on loan from Wolves to add experience to their push for promotion. The 33-year-old, who has played in the Premier League for Hull and Bolton, started his career with Oxford in the late-1990s and has also played in the lower divisions for Swansea.

SWINDON TOWN

MIDFIELDERS



4 MASSIMO LUONGO

Massimo joined Swindon from Tottenham on a season-long loan in July 2013, before completing a permanent move just before transfer deadline day. The 22-year-old, who first played on loan at The County Ground at the end of the 2012/13 season, enjoyed a successful first term with the club and was called up to the Australian squad for last summer's World Cup in Brazil.

7 BEN GLADWIN

Formerly with the Academy at Reading, Ben penned a professional contract with tonight's visitors in 2013 after being recruited from non-league Marlow. Aged 22, Ben has now made almost 50 appearances for the first team.

8 YASER KASIM

A former player with Brighton's Academy side, Kasim (23) joined Town ahead of the 2013/14 campaign. In his time at the Amex Stadium, the holding midfielder played on loan at Luton and Macclesfield and has also represented Iraq at international level.



14 JOHN SWIFT

John arrived on loan from Chelsea in January, adding to experience gained in an earlier loan spell with Rotherham at the start of the campaign. The 19-year-old's only outing for Chelsea came as a late substitute for Eden Hazard at Cardiff last May.

19 LOUIS THOMPSON

Louis (20) came through the ranks at Swindon's Academy to make his senior debut while still a first-year scholar. He signed a professional deal in summer 2013 and after an impressive season was signed by Norwich on transfer deadline day in August. The Canaries then loaned Louis back to tonight's visitors until the end of the campaign.

26 ANTON RODGERS

The son of Liverpool manager Brendan Rodgers, Anton moved to Swindon last summer after leaving Oldham. Having started his career at Chelsea, the 22-year-old broke into the professional game with Brighton and has also played on loan at Exeter.



FORWARDS



10 ANDY WILLIAMS

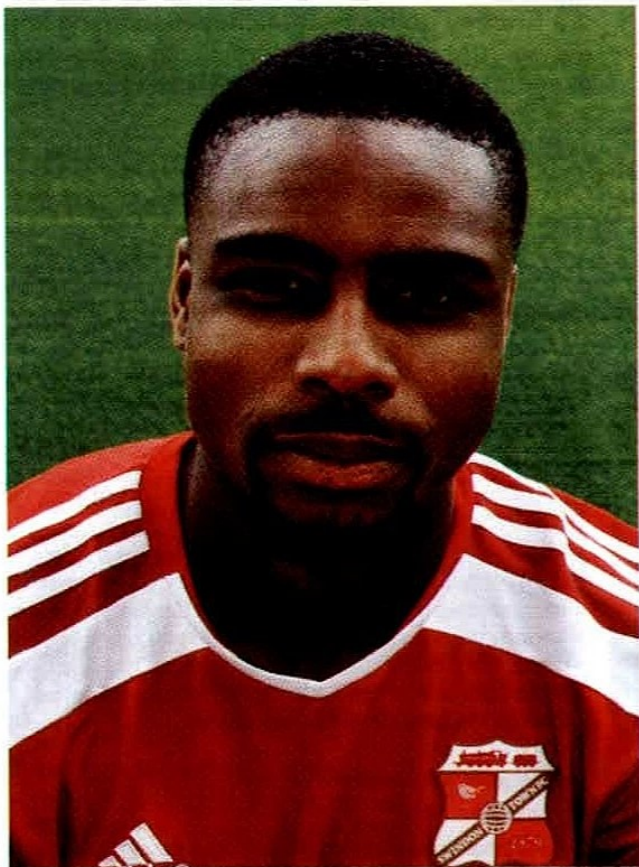
The leading scorer in League One for much of this season, Andy was formerly with Bristol Rovers and Hereford, before joining Swindon in the summer of 2012 from Yeovil. The 28-year-old had netted 21 goals for The Robins by the start of April.

9 MICHAEL SMITH

A January 2014 signing from Charlton, Michael made the perfect start to his Swindon career when he netted twice on his debut against Shrewsbury. After learning his trade with the renowned WallSEND Boys Club, the 23-year-old started his career with Darlington and also spent time on loan at Accrington, Newport, Colchester and AFC Wimbledon.

16 CONNOR WALDON

Connor is a product of our visitors' Academy system, signing professional forms in the summer of 2013. The 20-year-old spent time out on loan at Gloucester and Tamworth last season.



20 JONATHAN OBIKA

After a brief spell on loan at The County Ground in 2011, Jonathan is now back in Wiltshire on a permanent deal having joined on deadline day last August from Tottenham. The 24-year-old netted twice on his debut at Bradford and went on to score in his first four games, equalling a record set by Swindon's all-time record goalscorer, Harry Morris, in 1926.

18 GEORGE BARKER

George came up through the youth system at Brighton, but made only four appearances from the bench before moving to Swindon in January 2014. The 23-year-old had spells on loan at Barnet and Newport during his time with Albion and was also loaned out to Tranmere earlier this season.

24 JERMAINE HYLTON

Jermaine penned a two-and-a-half year contract with Swindon in the January transfer window, joining The Robins from non-league Redditch United. The 21-year-old was previously with Birmingham and Kidderminster, although he never broke into their first elevens.

OPPOSING VIEW

A new feature for this season sees Rochdale fan David Chaffey do his best Michael Parkinson impression as he interviews supporters of our opponents. Swindon fan **ANDREW FERGUSON** is in the spotlight tonight.



1. HOW LONG HAVE YOU BEEN SUPPORTING SWINDON?

Too long! The first Swindon game I went to was when I was seven-years-old. It was Sunday 6th December 1992, we lost 4-2 to Derby County, but I don't remember a lot from the game other than it was freezing cold and we missed a penalty in the last minute!

2. CAN YOU SUM UP YOUR SEASON SO FAR?

It's been a very good season for Town. The recent 3-0 defeats to our promotion/play-off rivals are concerning, but overall there's been a lot more ups than downs and with the club staying relatively stable off the pitch, it's been a nice surprise for fans that all the news has been about how well they have played on the pitch rather than boardroom antics.

3. YOU'VE BEEN AT THE TOP END OF THE TABLE MOST OF THE SEASON. WHAT DO YOU PUT THIS DOWN TO?

I think there have been a number of different factors, with our style of play being paramount. We play a patient, fluid game, with the aim to dominate possession (similar to Swansea). Premier League and Championship clubs have noticed our style of play and we've been able to make some fantastic loan signings, such as current England U20 international Jordan Turnbull, Jack Stephens, John Swift and Harry Toffolo. These lads are young, confident and driven and have slotted into the team fantastically well. There is a great team spirit in the camp.

4. WHAT WERE YOUR EXPECTATIONS BEFORE THE SEASON STARTED?

I would personally have been happy with a top half or play-off finish. A number of Swindon fans predicted relegation for us this season, but then again a lot of our supporters are like that!

5. HOW DO YOU RATE YOUR MANAGER MARK COOPER?

Coops has done a fantastic job on a limited budget and held the side together when the club was going through a number of ownership issues and boardroom squabbles. He has bonded the squad together and you can clearly see that the players enjoy working with himself and Luke Williams, the assistant coach. I haven't been surprised to see he has been linked with a number of different jobs this season as his style of play is very attractive and he gets the best out of his players.

6. THE REVERSE FIXTURE SAW DALE PICK UP A 3-2 WIN AT THE COUNTY GROUND. ARE YOU CONFIDENT OF AVENGING THAT DEFEAT?

Rochdale were the best side to come to the County Ground this season before MK Dons last Saturday. I was very impressed with the style of play and the way that you didn't sit back with ten men behind the ball. A lot of teams come to Swindon with that mentality and we have passed them to submission, although we have been excellent away from home, winning ten and losing five. I personally think this will end up 1-1.

7. WHEN I WAS GROWING UP SWINDON WERE IN THE PREMIER LEAGUE. DO YOU EVER SEE A RETURN TO THE TOP LEVEL?

Every lower league fan dreams that their club will make the Prem! I feel that Swindon are at least a Championship club; we have a massive catchment area and perhaps with either a new stadium or a redevelopment of the rapidly ageing County Ground, we could attract more fans, bring in more revenue and

make a real push for the upper echelons of the pyramid.

8. WHAT DO YOU MAKE OF OUR MANAGER KEITH HILL?

I can't say that I know a lot about Keith, but it looks like he's done an excellent job since coming back from Barnsley, getting the club promoted and now with a real chance of making the play-offs in League One. Rochdale fans must be delighted that he returned to finish off what he started.

9. WHICH PLAYERS SHOULD DALE BE WATCHING OUT FOR IN THE SWINDON SQUAD?

Our star player would have to be Massimo Luongo. He was voted MVP for the Asia Cup in January and he also scored in the final. He is a versatile play-maker, who can play as a holding midfielder, a traditional centre midfielder or a Number 10. He is very comfortable with the ball at his feet, has the pace and skill to glide past players and has a fantastic range of passing. In January we rejected bids from La Liga side Sevilla and an unnamed Turkish Super Liga side. Interest in him is high and it's highly likely he will leave the club for a large fee at the end of the season.

10. WHO IS YOUR FAVOURITE-EVER SWINDON PLAYER?

That's a tough one, but my favourite would have to be Jan Åge Fjørtoft. He was our star Number 9 during our only season in the Premier League. It took him a while to settle in, but he ended up scoring 13 goals in our last 17 Premier League games. As a nine-year-old, whenever I scored down the park or at school, I would do Jan's famous celebration where he would stretch out both of his arms and run around the pitch like an aeroplane! Legend!

11. IS THERE ANYBODY IN THE CURRENT DALE SQUAD THAT CATCHES YOUR EYE?

I very much like your midfielder Peter Vincenti. He ran the show against us at the County Ground and scored a good header before getting injured; I'm sure Coops will be instructing our midfield to keep him as quiet as possible. We will also be wary of ex-Town loanee Calvin Andrew, who seems to have found a bit of a scoring touch! He's a unit up top and could cause our young defenders problems.

12. WILL YOU BE MAKING THE LONG JOURNEY NORTH TO SPOTLAND FOR THIS GAME?

We have eight games in 24 days this month, so I have to carefully choose which away matches I go to. With the possible expense of the play-offs looming as well, it's unlikely that I will be attending this fixture. Sorry!

13. WHERE DO YOU EXPECT TO FINISH IN THE LEAGUE THIS SEASON? CAN YOU ACHIEVE PROMOTION?

I expect us to finish in fourth place. We are more than capable of winning the play-offs, unless we get MK Dons. They always seem to beat us!

14. WHAT HAS BEEN THE HIGHLIGHT OF YOUR SEASON?

My highlight would be us beating Bristol City 1-0 at the County Ground and our captain Nathan Thompson celebrating in front of the away end; it brought pure joy to my soul!

15. AND FINALLY, WHAT ARE YOUR PREDICTIONS FOR THE MATCH?

My prediction will have to be a 1-1 draw. The lads have played poorly in the last few games and will be well up for gaining some momentum for the play-offs. Who knows, it could be a dress rehearsal for the final at Wembley.

HIGHER

OR

LOWER

We pit two players with connections to tonight's visitors against each other and ask you to answer five questions about them.



BLAIR STURROCK

Much-travelled Scottish striker Blair Sturrock moved to Swindon in 2006 having been released on a free transfer by Dale boss Steve Parkin.

The frontman started his career at Dundee United where his father, Paul Sturrock, was the manager and it was a family tie that would serve him well during his career.

Sturrock junior followed his dad south in 2001 when he signed for Plymouth, but he started only nine league matches in three seasons with the club. He was a perennial substitute during his stint at Home Park and came off the bench a whopping 60 times in all competitions.

Blair moved on a free transfer to Kidderminster in December 2004 and then arrived at Spotland the following summer.

He spent the entire 2005/06 season with the club and Dale fans will remember him as a hard-working striker who ultimately never really held down a regular place in the side. In fairness to him we did have Rickie Lambert and Grant Holt at the time!

It was no real surprise when Sturrock was released that summer and perhaps likewise when his father signed him on non-contract terms at Swindon a few months later. He was again a bit part player at the County Ground, but did play several games as the club won promotion to League One.

The 2007/08 season saw Sturrock start the season in the side, but new arrivals soon pushed him down the pecking order.

Despite Sturrock senior resigning in November 2007, his son remained at Swindon until 2009, when he left for Mansfield.

After leaving Field Mill he linked-up with Southend, where his father was now the manager.

Sturrock spent two seasons with The Shrimpers, but was released in 2012. He later represented Bishops Cleeve before calling time on his career.



ASHLEY GRIMES

Grimes was a former Manchester City youngster who was reunited with his Blues' coach Steve Eyre when he moved to Spotland in 2011.

He had spent the previous three seasons at Millwall having left City without making a first team appearance, although he had enjoyed a very productive loan spell at Lincoln prior to his arrival at Dale.

Grimes' career at Spotland started well when he scored twice in a Carling Cup victory over Chesterfield and then again a few days later in a 2-2 draw with Huddersfield. His next goal came in a 4-2 win at Bury - the first league victory for new gaffer Eyre - and he had found the net eight times by the start of October.

Unfortunately the form of the team had failed to live up to expectations and Eyre was sacked shortly before Christmas.

Under John Coleman, Grimes was in and out of the side, but did score twice in the 3-0 home victory over Bury.

He finished the season making 42 appearances and scoring 11 goals.

Grimes started the 2012/13 campaign in Coleman's new-look side and had again reached double figures by the turn of the year.

However, Coleman's sacking in January had a detrimental effect on Grimes' Dale career as he scored just one more goal before being released by Keith Hill. It seemed Grimes would be signing for Cheltenham that summer, but he had a late change of heart and joined the 'Revolution' at Bury.

Despite the publicity given to his signing, Grimes failed to score a single goal for The Shakers and he was released from his contract last summer, when he linked-up with Walsall.

Back in 2007, while still a City player, Grimes spent a month on loan at Swindon. He failed to start a league game at his temporary club, only appearing four times as a substitute.



QUESTIONS

1. Who has made appearances for most league clubs?
2. Who has scored most Football League goals?
3. Who was the youngest when he made his Dale debut?
4. Sturrock made 111 starts during his league career, but how does this compare to the number of times he came on as a substitute?
5. Grimes is currently 28, but was Sturrock older or younger on his final league appearance in 2013?

1. (Grimes 6) STURROCK 7
2. GRIMES 37 (Sturrock 28)
3. GRIMES 24 (Sturrock 25)
4. Lower - he was a used sub. 120 times!
5. Higher - he was 30

ANSWERS

FACTS & STATS

ROCHDALE v SWINDON TOWN

COMPLETE RECORD AT SPOTLAND

	Pld	W	D	L	F	A
League	7	0	5	2	9	11
FA Cup	1	0	0	1	0	2
TOTAL	8	0	5	3	9	13

OVERALL

	Pld	W	D	L	F	A
League	15	1	6	8	17	29
FA Cup	1	0	0	1	0	2
TOTAL	16	1	6	9	17	31

League Milestones

First met:	1958/59
Doubles achieved:	0
Doubles conceded:	2
Biggest wins:	Home: None Away: 3-2, 2014/15
Heaviest defeats:	Home: 1-2, 1985/86 Away: 0-4, 1985/86
Last home win:	None
Last away win:	3-2, 2014/15
Last home draw:	3-3, 2010/11
Last away draw:	1-1, 2010/11
Last home defeat:	1-2, 1985/86
Last away defeat:	0-1, 2006/07

League Attendances

Home Average:	2,543
Away Average:	5,615
Home Highest:	6,617 in 1958/59
Away Highest:	9,558 in 1953/54
Home Lowest:	1,082 in 1984/85
Away Lowest:	2,808 in 1983/84



LAST HOME MEETING

Saturday 20th November 2010
npower League 1

ROCHDALE 3 Jones 2 (1 pen), Grant

SWINDON TOWN 3 Timlin, Austin, Rose

Rochdale: Lillis, Wiseman, T Kennedy, J Kennedy, Holness, Dawson, Adams (Akpa Akpro), Jones, Joe Thompson, O'Grady, Grant (Elding)

Swindon T.: Smith, Cuthbert (Sheehan), Rose, Jean-Francois, Morrison, Douglas, Timlin (Caddis), Prutton, Ritchie, Dossevi (Ball), Austin

Att: 2,866

Referee: M Brown (East Yorkshire)



HOME & AWAY

The Last...

FA CUP TIE

11 Jan 1913, Round 1
Rochdale 0, Swindon 2

LEAGUE CUP TIE

None

FOOTBALL LEAGUE TROPHY TIE

None

ROCHDALE HAT-TRICK

None

SWINDON HAT-TRICK

22 Jan 1983
Paul Rideout
Swindon 4, Rochdale 1

ROCHDALE PENALTY SCORED

20 Nov 2010
Gary Jones
Rochdale 3, Swindon 3

SWINDON PENALTY SCORED

8 Mar 1986
Colin Gordon
Rochdale 1, Swindon 2

ROCHDALE OWN GOAL CONCEDED

12 Aug 2006
Alan Goodall
Swindon 1, Rochdale 0

SWINDON OWN GOAL CONCEDED

None

ROCHDALE DEBUTANT

20 Nov 2010
Bobby Grant
Rochdale 3, Swindon 3

ROCHDALE FAREWELL

5 Oct 1985
Phil Chambers
Swindon 4, Rochdale 0

MOST LEAGUE APPEARANCES v SWINDON

5 – Ian McMahon, Dave Thompson & Bill Williams

MOST LEAGUE GOALS v SWINDON

2 – Mark Hilditch



Alan Goodall scored an own goal in Dale's 1-0 defeat at Swindon in August 2006



Bobby Grant made his first debut for Dale against The Robins in November 2010



Bill Williams is one of three Dale players with five appearances against Swindon



Mark Hilditch is the only Dale player to score more than once against Town

LAST HOME DEFEAT

Saturday 8th March 1986
Canon League Division Four

ROCHDALE 1

Moore

SWINDON TOWN 2

Gordon (pen), Henry

Rochdale: Redfern, Johnson, Grant, McMahon, Cooke, Hicks, Hildersley (Gamble), Taylor, Moore, Heaton, Mossman

Swindon T.: Allen, Ramsey, Roberts, Barnard, Cole, Calderwood, Hockaday, Kamara, Gordon, Coyne, Henry

Att: 1,989

Referee: TJ Holbrook (Wolverhampton)



SATURDAY 8th March 1986

Kick-off 3 p.m.

DALE v SWINDON TOWN

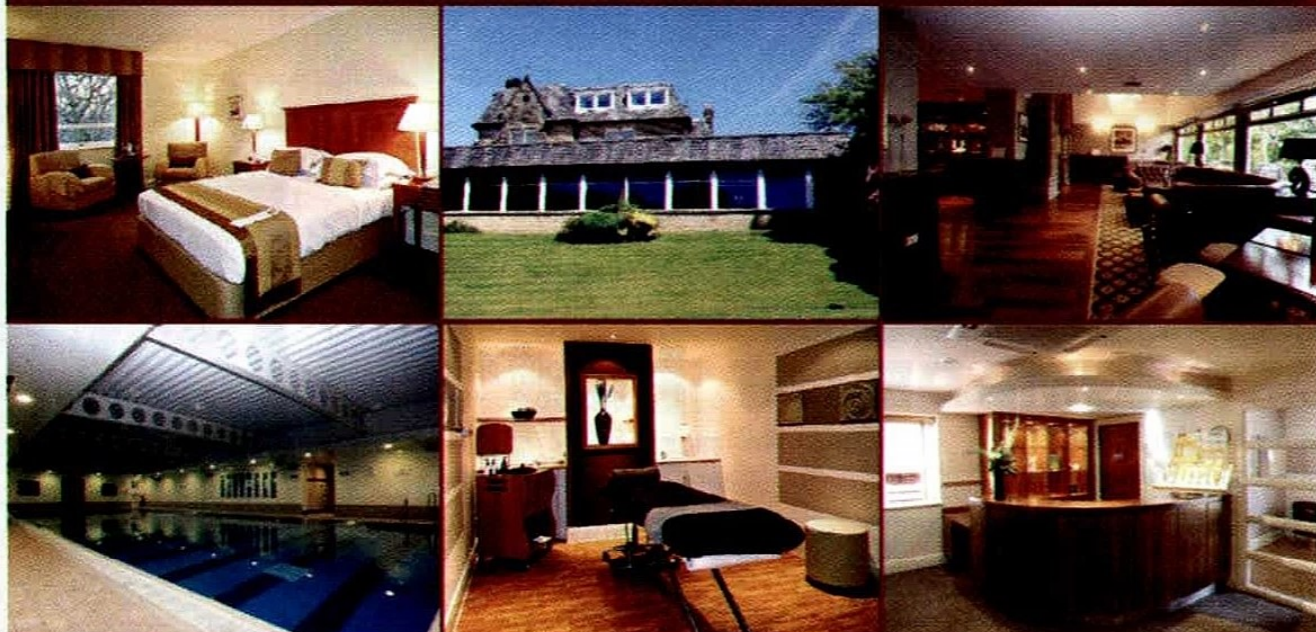
Main Matchball Sponsor: Stephen Shepherd

Wholesale Butcher: Littleborough



Mercure

Mercure NORTON GRANGE HOTEL AND SPA MANCHESTER NORTH



Mercure Norton Grange is available for a wide range of events, including:

- Weddings including Civil Ceremonies
- Conferences for up to 220 delegates
- Exhibitions
- Private Dinner Parties
- Birthday and Anniversary Celebrations
- Christenings
- Naming Ceremonies
- Pamper Days

With 81 beautifully appointed en-suite bedrooms and our Spa Naturel Health, Fitness and Beauty Club, which includes an 18 metre indoor pool, indoor/ outdoor hydropool, thermal suite with bio sauna, rock sauna, cold room and aroma steam room, technogym and 6 beauty treatment rooms, we really can provide the complete package. For more details on any of our facilities contact us now.

Mercure NORTON GRANGE HOTEL AND SPA

Castleton, Rochdale, Greater Manchester OL11 2XZ Tel: 01706 630 788 Fax: 01706 516 761

Email: h6631-sb@accor.com

www.mercure-uk.com

HALF-TIME QUIZ

TRIVIA TEST

We all love a good trivia question. Can you answer this one?

Who played against Scotland in the 1982 World Cup before moving to Ipswich Town and then playing and managing in Scotland?

.....

MISSING MARKSMAN

Who is missing from the players who scored Dale's goals in the 3-3 home draw with Swindon in February 1984?



.....(?)
Dave Thompson, Vernon Allatt (pen)

CONNECT 4

The surnames of the players pictured all have a common link. Who are they and what is the link?



.....
.....
.....

SHIRTS SPONSORS

Which team has, at some time in the past, been sponsored by the company named?

FADS

.....

BROTHERLY LOVE

The player pictured had a brother who played in the Football League/Premier League. Name the player and his brother.

.....
.....



TRIVIA TEST: Sergei Ballachov
MISSING MARKSMAN: Ian Griffiths
CONNECT 4: Glenn COCKERILL, Danny CROW, Paul SPARROW & Alvin MARTIN - Birds
SHIRTS SPONSORS: Charlton Athletic
BROTHERLY LOVE: Wayne Clarke, brother of Allan Clarke

ANSWERS



SPONSORS

OFFICIAL MATCH SPONSOR

HOWARTH TIMBER & BUILDING SUPPLIES



HOWARTH TIMBER & BUILDING SUPPLIES

It is a pleasure to welcome Nicola and her guests from Howarth Timber & Building Supplies for their final sponsorship of the season this evening.

Howarth's are one of our principal sponsors and will be back again next season for what will be their eighth

straight year showing fantastic support for the club.

As always it will be a mix of staff, customers and clients this evening, guaranteeing a lively atmosphere in the box.

Have a great evening and on behalf of the club, thank you for your support.



**SADDLEWORTH
PHYSIOTHERAPY
CLINIC**

We are Oldham's leading Physiotherapy practice and have been established in Uppermill since 1995.

We offer prompt advice and treatment for all skeletal problems and injuries. All staff are Advanced Orthopaedic Practitioners and through our additional qualifications and experience are able to carry out injections and request investigations such as X-Rays, Scans and Blood Tests.

We provide a unique service and in our most recent customer satisfaction survey 100% of those patients who completed the survey would recommend us to others.

10% Discount on first treatment on production of this advert.

18 High Street, Uppermill, OL3 6HX Telephone: 01457 871777.

Email: physio@zen.co.uk Web: www.saddleworthphysio.co.uk



02 ROCHDALE EXCHANGE SHOPPING CENTRE

MAN OF THE MATCH

Jack O'Connell receives his Man of the Match award from sponsors Dale Exiles and (just in the photo) Noah Booth following his final appearance for Dale against Yeovil last month.

WE NEED YOU IN OUR TEAM

NHS
Blood and Transplant

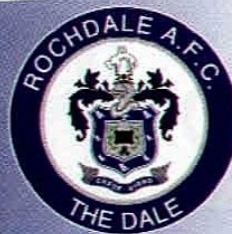
Three people die every day waiting for an organ, so we need a bigger squad. Whatever the result today, please help us score another name on the register. Sign for Life at organdonation.nhs.uk and save others after you're gone.

#organdonor

Sign
**FOR
LIFE**

 Thank
You

PREMIER LEAGUE DALE



We take a look at the Dale players who have also appeared in the Premier League during their careers.



PAUL SIMPSON

It's sad that Paul Simpson's Rochdale career was tainted by his time as manager, as he served-up some wonderful moments as a player.

'Simma' was brought to Spotland from Blackpool by John Hollins towards the end of the 2001/02 campaign. He marked his debut with an astonishing goal from the touchline against Plymouth and later added another stunner at Rushden & Diamonds in the play-offs.

His all-round game was clearly from a different level and although he couldn't help Dale to promotion via the play-offs, Simpson was the natural successor to Hollins during the summer.

His recruits were promising, with Lee Hodges, in particular, exciting the fans, but apart from the team's run to the fifth round of the FA Cup, there was little else to enthuse over.

Home form was a particular concern and with crowds dropping to around the 1,500-mark and some fans throwing their season tickets at the manager, it was no surprise when he was sacked shortly after the end of the 2002/03 campaign.

Simpson later managed Carlisle, Preston and Shrewsbury, with varying degrees of success, and is now assistant manager to Steve McLaren at Championship outfit Derby County.

It was with Derby where Simpson made his only appearances in the Premier League, although he had played in the old First Division with Manchester City at the start of his career.

He actually scored in The Rams' first game in the Premier League in August 1996 as they drew 3-3 with Leeds and added another goal later in the season in a 6-1 thrashing at Middlesbrough.

Simpson started the 1997/98 season in the Derby team as they lost 1-0 at Blackburn, but he was replaced by Ashley Ward at half-time and didn't appear in the league for County again.

Two months later he moved on loan to Wolves, before making a permanent switch to Molineux.

Rochdale (Mar 02 – May 03):

50 apps, 17 goals

PREMIER LEAGUE

Derby (Aug 96 – Aug 97):

20 apps, 2 goals

Like John Pemberton who was featured earlier in this series, Geoff Thomas was another one of those who got away.

He made his debut at age 19 in a 1-0 defeat at Darlington in October 1983, but added only a further 11 appearances, primarily because manager Jimmy Greenhoff and his temporary replacement, Les Chapman, could never decide on a settled team.

Thomas's second game (and only goal) for Dale came in a 1-0 win at Crewe and he must have impressed home manager, Dario Gradi, as he enticed him to leave Spotland for Gresty Road in late-March 1984.

At the time Crewe's youth policy was in its infancy, but Gradi was starting to bring in unwanted youngsters from other clubs who he hoped to develop and sell on in the future.

This was certainly the case for Thomas, who made almost 140 appearances for The Railwaymen before moving to Crystal Palace in June 1987 for a modest £50,000 fee.

Three years later he played against Dale in the fifth round of the FA Cup and later helped Palace to the final, where they lost in a replay to Manchester United.

In August 1992 the Premier League kicked-off and Geoff

was in the Palace side that earned a 3-3 draw with Blackburn, for whom new striker Alan Shearer plundered a debut hat-trick.

He missed around a quarter of the season through injury and when Palace were relegated back to Division One, Thomas ended his six-year association with the club to join Wolves.

Unfortunately Geoff suffered with injuries in four seasons at Molineux, so it was a surprise when he earned a move to Nottingham Forest in July 1997.

Forest won promotion to the Premier League that season and Thomas played in their first five games, before injury problems again curtailed his appearances.

Geoff retired from playing in 2002, but was later diagnosed with chronic myeloid leukaemia, from which he has thankfully now recovered.

Rochdale (Oct 83 – Mar 84):

12 apps, 1 goal

PREMIER LEAGUE

Crystal Palace (Aug 92 – May 93):

29 apps, 2 goals

Nottingham Forest (Aug 98 – Sep 98):

5 apps, 1 goal

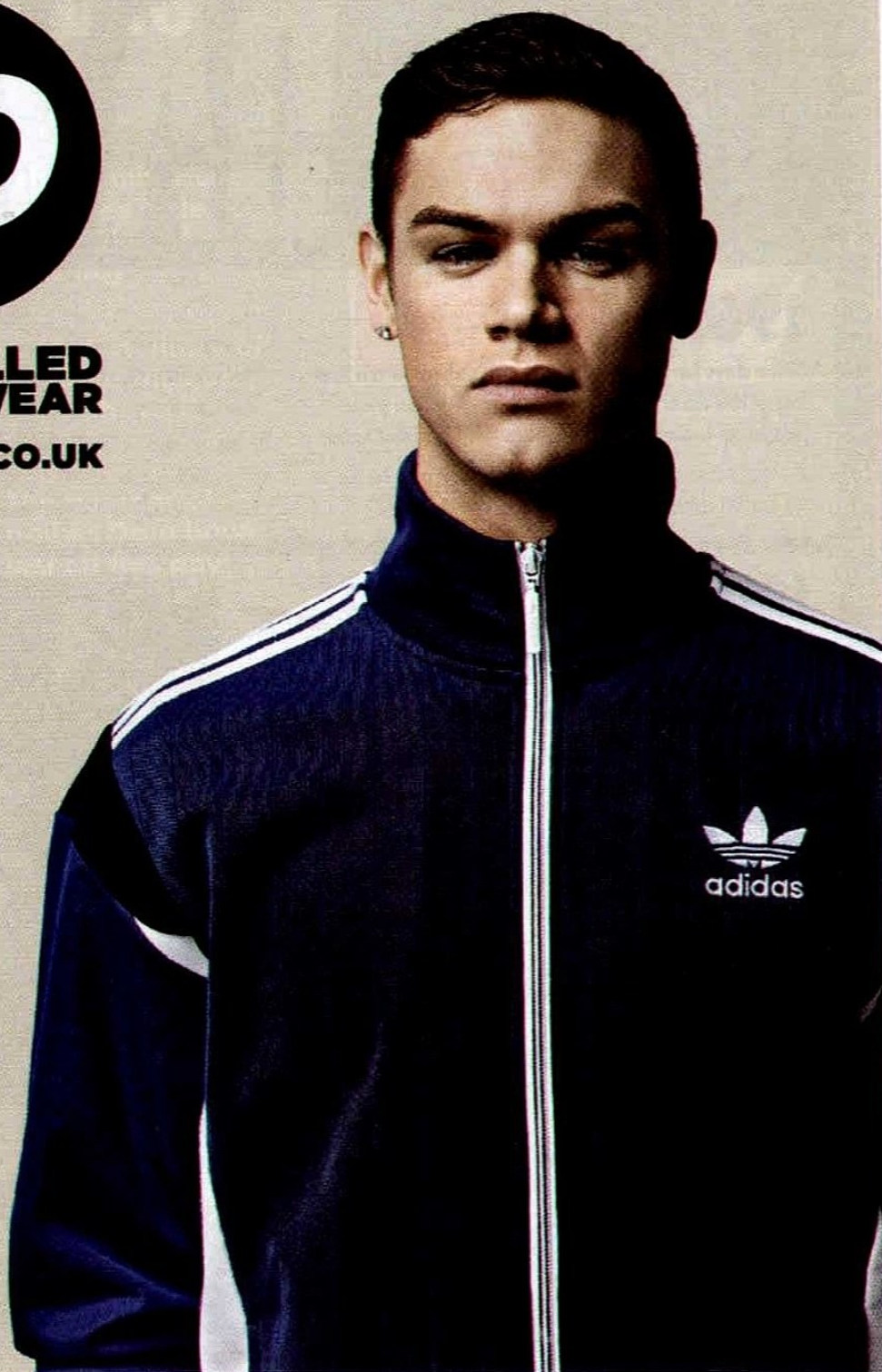



GEOFF THOMAS



**UNRIVALLED
STREET WEAR**

JDSports.CO.UK



Available at your local  Yorkshire St

INSTORE | ONLINE | JD APP
JDSports.CO.UK



PROUD KIT SUPPLIERS TO ROCSDALE A.F.C.

ON THIS DAY



1969

Seven days earlier, Dale's 15-match unbeaten run that had taken them to the brink of the promotion places had come to an end against Chester at Sealand Road.

Ahead of the return fixture at Spotland, Dale were a point outside the top four, while their visitors were three points further behind.

Revenge was clearly on Dale's mind and on a wet and windy night, they eased into the top three with a powerful attacking display that blew Chester away.

It was 1-1 at the interval — Tony Buck scoring for Dale — but after the break it was a different story as goals from Steve Melledew and Dennis Butler (2) completed a comprehensive 4-1 home win.

1987

Dale pulled off one of the greatest league results in their history to enhance their chances of avoiding relegation from the Football League.

Eddie Gray took his men to face Preston at Deepdale, but they were given little hope.

North End were second in the table on 75 points, while Dale were bottom with only 34 points, four adrift of Burnley and five behind Torquay.

What happened was remarkable as Dale dominated the majority of the game and found their shooting boots to record an astonishing 4-2 win.

Ian Johnson, Lyndon Simmonds and Robbie Wakenshaw (2) were the Dale scorers on a memorable night, although poor results over the next few weeks still saw Dale take their relegation escape down to the wire.

2001

Dale remained five points outside the play-offs after a disappointing goalless draw at Macclesfield on Easter Saturday.

The saving grace for Dale was that they still had up to three games in hand on some of the teams above them, but they couldn't afford to waste any more opportunities like they did at the Moss Rose.

It was a tight game with few chances, but Dale spurned the best when they were awarded a second half penalty.

Unfortunately Gary Jones saw his spot-kick saved by the 'keeper and Dale had to frustratingly settle for one point.



SELECTED RESULTS ON THIS DAY

1922 Wigan B (h) W 4-2

1956 Bradford (h) W 3-1

1973 York (a) W 2-1

1989 Crewe (a) L 1-3

2007 Mansfield (a) W 2-1

2012 Exeter (h) W 3-2

IN NUMBERS

14th April

22
11
6
5
3
3

The number of matches Dale have played on this day

The number of Dale wins on 14th April

The number of games Dale have lost on this day

Dale have drawn five times on 14th April

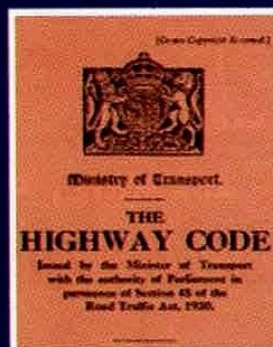
Dale have played Chester three times on this day

Dale won their first three games on 14th April



Sam Minihan played his only senior game for Dale against Exeter on this day in 2012

ALSO ON THIS DAY



The Highway Code: first published 84 years ago



John Sergeant: 71 today

1927 The first Volvo car premiered in Gothenburg, Sweden

1929 'Thunderbirds' creator, Gerry Anderson, was born in London

1931 The first edition of the Highway Code was published in Great Britain

1944 Journalist and television presenter John Sergeant was born in Ealing

1958 Actor Peter Capaldi was born in Glasgow

1961 Actor Robert Carlyle was born in Glasgow

IN THE CHARTS

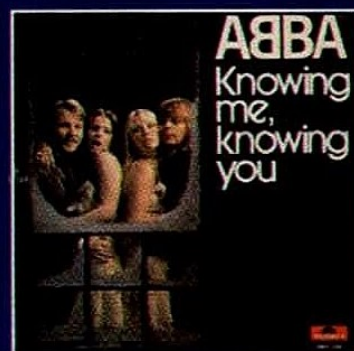
Number One records on this day down the years include:

1965 'Concrete & Clay' (Unit Four Two)

1967 'Somethin' Stupid' (Frank & Nancy Sinatra)

1977 'Knowing Me, Knowing You' (ABBA)

1994 'Everything Changes' (Take That)



ABBA: top of the charts 38 years ago



The Little name company
with a lot to offer!

Bespoke Buffets
Delicious Savoury Pies
Event Planning & Referral Service
Mini Fish & Chip Buffets
Barbecues
Wedding & Party
Celebration Dinners
Catering with Personality



Fish & Chip Buffets
personalised for your event



t 07801 483272 / 01457 877717 e enquiries@littleddeerhill.co.uk

www.littleddeerhill.co.uk



Proud to support Rochdale AFC in 2014/15

Accidents Do Happen

...call your local compensation lawyers



Solicitors LLP

Let us help you...

Call or email us for a No obligation chat

- ✓ Road accidents
- ✓ Work accidents
- ✓ No Win No Fee available

- ✓ Trip or slip
- ✓ Holiday accidents
- ✓ Home visits

- ✓ Professional Negligence
...has your accident claim gone wrong?

Tel 01706 34 33 22

e-mail: paul@a2solicitorsLLP.co.uk
www.a2solicitorsLLP.co.uk

3 Baille Street,
Rochdale OL16 1JJ

Solicitors Regulation Authority No. 565131 www.sra.org.uk



DALE ACTION

Tuesday 24th March 2015
Sky Bet League 1



OLDHAM ATHLETIC 3 ROCHDALE 0



DALE ACTION

Tuesday 24th March 2015
Sky Bet League 1



OLDHAM ATHLETIC 3 ROCHDALE 0

1



2



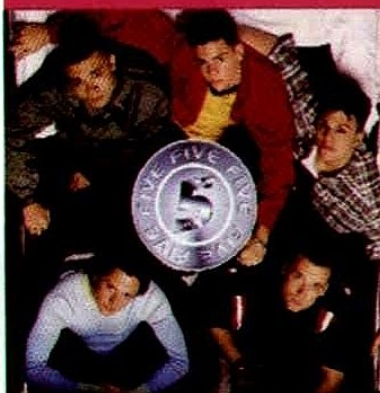
3





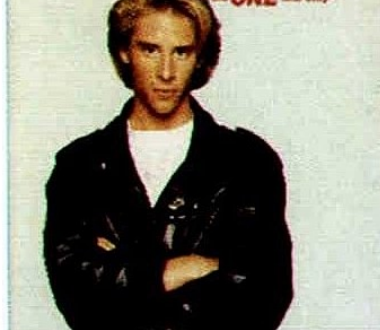
- 1 Ian Henderson keeps possession under the watchful eye of a digger!
- 2 Reuben Noble-Lazarus sends an angled volley towards goal
- 3 Deft control from Ian Henderson as he hooks the ball back into Jamie Allen's path
- 4 Reuben Noble-Lazarus looks for a gap in the Oldham defence
- 5 Rhys Bennett just gets to the ball first
- 6 Peter Vincenti accelerates away from Mike Jones
- 7 Jack O'Connell comes out on top in this battle for possession

Pictures by Matt McNulty



CHESNEY HAWKES

the **ONE** and only

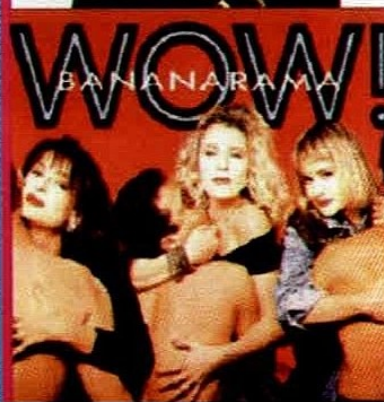


sat 23 may 80s & 90s NIGHT

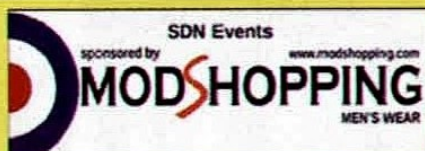
DJs

Andy "Big H" Hargreaves
Nick Robinson
Zak Thompson
Colin Schofield & guests

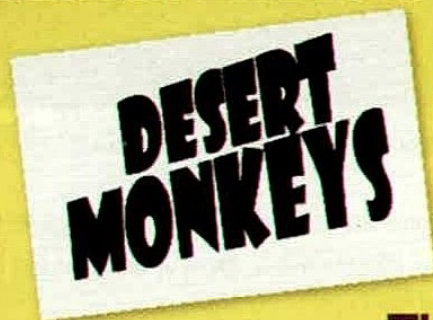
TICKETS £5 adv
£7 OTD if available
Doors 7pm



SDN EVENTS at the RATCLIFFE BARS ROCHDALE (sandy lane OL11 5DR)
TICKETS FOR BOTH EVENTS AVAILABLE FROM The Ratcliffe Bars Rochdale/ The Rochdale AFC Club shop
Carousel Cards & Gifts Norden/ Hair by Caroline & Co, Heywood / Midland Pub, Castleton / and online at www.ticketline.co.uk
BOTH EVENTS OVER 18s ONLY for more info call 01706 646851 or find SDN events on [f](#) [t](#)



MAYDAY LIVE 2015 - BANK HOLIDAY SUNDAY 24 MAY



THE UK'S LEADING
ARCTIC MONKEYS
TRIBUTE



The Backhanders
Housing Project Hill • The State
DJ Dave Sweetmore & Friends
TICKETS £7 adv • £10 OTD if available



NUMBERS RHYS BENNETT

Born:
Manchester,
1st September 1991

Position:
Defender/Midfielder

Squad No.:

3

23

...July 2011, made his professional debut in Falkirk's Scottish League Cup tie at Brechin.

33

...minutes into that debut, Rhys scored his first career goal.

25

...Rhys made 25 appearances for Falkirk in a season-long loan spell from Bolton in 2011/12.



5

...yellow cards were shown to Rhys during that season north of the border.



4

...September 2012, made his Rochdale debut in a JPT tie against Fleetwood.

15

...September 2012, made his Football League debut in Dale's 2-1 win at AFC Wimbledon.

50

...Rhys ran at least 50-yards with the ball to open his scoring account for Dale in a 3-2 home loss to York in December 2012.

22

...Rhys made 22 league appearances in Dale's 2013/14 promotion campaign.



100

...Rhys played his 100th game for Dale in all competitions in last month's 3-0 defeat at Oldham.



5

...All of Rhys' five goals for Dale have come at Spotland.

CARCRAFT

proud to support
Rochdale AFC

Drive away today
You could be driving your next car sooner than you thought!



Every car comes with our Drive Happy Package

- ☒ 1 year guarantee*
- ☒ 1 year RAC assistance
- ☒ 1 year free servicing
- ☒ Free MOT in the first year

Let us take the hassle out of your next car purchase. With a **guaranteed part exchange** on your old vehicle and a wide range of **flexible finance options** to suit every pocket, you can drive away the same day.*

Choose from 1000's of quality checked vehicles each of which comes with our personal Drive Happy Package.† Enjoy free servicing, a free MOT and RAC roadside assistance as standard for the first year.

CARCRAFT
drive happy

Showrooms nationwide open 7 days a week til late

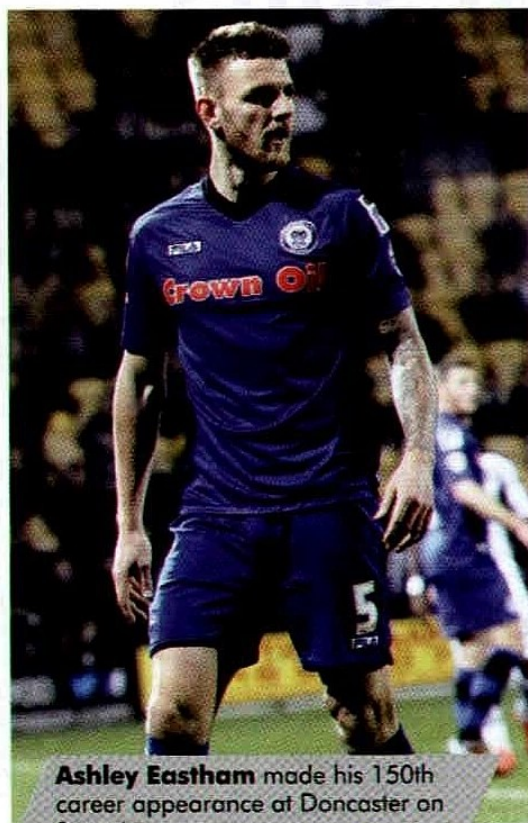
carcraft.co.uk

* Terms and conditions apply including claims limit of £1000. Excludes business use. All finance subject to status. To drive away the same day you will need to bring your driving licence and 2 recent proofs of ID

STATISTICS



sky BET
LEAGUE 1



Ashley Eastham made his 150th career appearance at Doncaster on Saturday

LEAGUE 1 TABLE 2014/15

Pos	Name	P	W	D	L	F	A	GD	PTS
1	Bristol City	42	26	11	5	80	36	44	89
2	Preston	41	23	12	6	69	34	35	81
3	MK Dons	41	22	10	9	81	40	41	76
4	Swindon	40	22	7	11	66	45	21	73
5	Sheff Utd	42	19	11	12	63	49	14	68
6	Chesterfield	42	18	10	14	61	52	9	64
7	Rochdale	41	18	6	17	67	53	14	60
8	Fleetwood	42	16	11	15	45	45	0	59
9	Bradford	41	15	12	14	51	47	4	57
10	Barnsley	42	16	9	17	55	58	-3	57
11	Peterborough	42	17	6	19	46	50	-4	57
12	Gillingham	42	14	13	15	58	61	-3	55
13	Doncaster	41	14	12	15	51	55	-4	54
14	Oldham	42	14	12	16	52	63	-11	54
15	Walsall	41	12	15	14	37	42	-5	51
16	Coventry	42	12	14	16	45	55	-10	50
17	Scunthorpe	41	13	11	17	54	65	-11	50
18	Port Vale	42	14	7	21	49	59	-10	49
19	Leyton Orient	41	12	11	18	55	58	-3	47
20	Crawley	42	12	11	19	47	68	-21	47
21	Crewe	42	13	8	21	38	71	-33	47
22	Notts County	41	11	13	17	40	53	-13	46
23	Colchester	41	12	8	21	51	66	-15	44
24	Yeovil	42	8	10	24	32	68	-36	34

LEAGUE 1 STATISTICS 2014/15

Best Home Win

7-0, MK Dons v Oldham A, 20/12/14

Best Away Win

5-0, MK Dons at Crewe A, 31/1/15

5-0, Doncaster R at Crawley T, 10/2/15

Highest Aggregate

8 goals

3-5, Barnsley v MK Dons, 13/9/14

5-3, Notts C v Crawley T, 18/10/14

Most Goals in a Match

4 goals

Joe Garner (Preston NE) v Crewe A (h), 14/3/15

Leading Scorers (all competitions)

21 – **Joe Garner** (Preston NE)

21 – **Andy Williams** (Swindon T)

Highest Attendances

27,306, Coventry C v Gillingham, 5/9/14

24,495, Sheffield U v Barnsley, 1/11/14

20,487, Sheffield U v Doncaster R, 7/4/15

Lowest Attendances

1,905, Crawley T v Fleetwood T, 13/9/14

1,954, Rochdale v Crewe A, 3/3/15

2,046, Crawley T v Colchester U, 28/12/14

LEAGUE 1 ATTENDANCES 2014/15

TEAM	HIGHEST	LOWEST	AVERAGE
Barnsley	17532	8328	9817
Bradford	16032	11683	13284
Bristol City	13731	10719	12059
Chesterfield	9723	4804	6817
Colchester	5668	2336	3601
Coventry	27306	2279	9209
Crawley	3570	1905	2571
Crewe	6429	3495	4599
Doncaster	11520	5197	6797
Fleetwood	5110	2601	3577
Gillingham	7961	4632	5576
Leyton Orient	6634	3534	4967
MK Dons	15642	6720	9107
Notts County	7746	3159	5408
Oldham	6344	2445	4358
Peterborough	7325	4449	6315
Port Vale	8524	3590	5221
Preston	16441	7491	10598
Rochdale	7269	1954	3418
Scunthorpe	5550	2773	3696
Sheffield U	24495	17030	19408
Swindon	12565	6332	7961
Walsall	5930	3534	4429
Yeovil	6837	3509	4381



ROCHDALE AFC 2014/15

Fixtures & Results

Date	Opposition	Res	Pts	Pos	Att	Away	Starting Players					
Sat 9 Aug	PETERBOROUGH UNITED	L 0-1	0	21	3613	799	Lillis	Rafferty (78)	Rose	Allen (65)	Lancashire	Tanser
Sat 12 Aug	PRESTON NORTH END (COC1)	L 0-2	-	-	2348	772	Lillis	Bennett	Rose (61)	Hery	Lancashire	Tanser
Sat 16 Aug	Chesterfield	L 1-2	0	21	5682	405	Lillis (60)	Rafferty	Kennedy	Done	Bennett	Tanser (64)
Tue 19 Aug	Crewe Alexandra	W 5-2	3	17	3742	327	C Logan	Rafferty	Kennedy	Allen	Eastham	Tanser
Sat 23 Aug	BRISTOL CITY	D 1-1	4	17	3115	791	C Logan	Rafferty	Kennedy	Allen	Eastham	Tanser
Sat 30 Aug	BRADFORD CITY	L 0-2	4	20	4758	2333	C Logan	Rafferty (67)	Kennedy	Allen	Eastham	Tanser
Tue 2 Sep	Crewe Alexandra (JPT1)	W 3-0	-	-	1529	103	C Logan	Rafferty	Tanser	Allen	Eastham	O'Connell
Sat 6 Sep	Crawley Town	W 4-0	7	13	2534	259	C Logan	Rafferty	Tanser	Allen	Eastham	O'Connell
Sat 13 Sep	Sheffield United	L 0-1	7	17	19122	791	C Logan	Rafferty (44)	Tanser	Allen (86)	Eastham	O'Connell
Tue 16 Sep	WALSALL	W 4-0	10	11	2082	230	C Logan	Rafferty	Tanser	Allen	EASTHAM	O'Connell
Sat 20 Sep	COVENTRY CITY	W 1-0	13	7	3583	875	C Logan	Rafferty (76)	Tanser	Allen	Eastham	O'Connell
Sat 27 Sep	Leyton Orient	W 3-2	16	5	4405	318	C Logan	Bennett	Tanser	Allen (33)	Eastham	O'Connell
Sat 4 Oct	BARNSELY	L 0-1	16	9	4380	1359	C Logan	Rafferty (72)	Tanser	Allen	Lancashire	O'Connell
Tue 7 Oct	WALSALL (JPT2)	L 0-1	-	-	1156	99	C Logan	Rafferty	Kennedy	Allen	Eastham	O'Connell
Sat 18 Oct	GILLINGHAM	D 1-1	17	12	2574	179	C Logan	Bennett	Tanser	Allen	Eastham	O'Connell
Tue 21 Oct	Swindon Town	W 3-2	20	9	6718	174	C Logan	Bennett	Tanser (40)	Allen	Eastham	O'Connell
Sat 25 Oct	Yeovil Town	W 3-0	23	8	3601	243	C Logan	Bennett	Rose	Allen (66)	Eastham	O'CONNELL
Sat 1 Nov	PRESTON NORTH END	W 3-0	26	4	6102	2839	C Logan	Bennett (82)	Tanser	Hery (82)	Eastham	O'CONNELL
Sat 8 Nov	Northampton Town (FAC1)	D 0-0	-	-	2790	432	C Logan	Bennett	Tanser	Hery (59)	Eastham	Lancashire
Sat 15 Nov	Port Vale	L 0-1	26	8	5043	566	C Logan	Rafferty (68)	Tanser	Allen	Eastham	O'Connell
Tue 18 Nov	NORTHAMPTON TOWN (FAC1R)	W 2-1	-	-	1717	107	C Logan	Rafferty (68)	Rose	Hery (55)	Eastham	LANCASHIRE
Sat 22 Nov	DONCASTER ROVERS	L 1-3	26	9	3229	644	C Logan	Bennett	Rose (45)	Allen	Eastham	Lancashire
Tue 25 Nov	Milton Keynes Dons	D 2-2	27	7	6720	200	C Logan	Bennett	Tanser	Allen	Eastham	O'Connell
Sat 29 Nov	OLDHAM ATHLETIC	L 0-3	27	8	7269	3178	C Logan	Bennett	Tanser	Allen (73)	Eastham	O'Connell
Sun 7 Dec	Aldershot Town (FAC2)	D 0-0	-	-	3143	298	C Logan	Rose	Tanser	Allen	Eastham	Lancashire
Sat 13 Dec	Colchester United	W 4-1	30	6	2920	183	C Logan	Rafferty	Rose	Lancashire	Eastham	O'CONNELL
Tue 16 Dec	ALDERSHOT TOWN (FAC2R)	W 4-1	-	-	2077	244	C Logan	Rafferty	Rose	Bennett (82)	Eastham	Lancashire
Sat 20 Dec	NOTTS COUNTY	D 2-2	31	6	2814	333	C Logan (5)	Rafferty	Rose	Lancashire	Eastham	O'Connell
Fri 26 Dec	Scunthorpe United	L 1-2	31	7	4004	546	Lillis	Rafferty	Rose	Bennett (86)	Eastham	O'Connell
Sun 28 Dec	FLEETWOOD TOWN	L 0-2	31	8	3123	308	Lillis	Rafferty	Rose	Lancashire	Eastham (64)	O'Connell
Sat 3 Jan	NOTTINGHAM FOREST (FAC3)	W 1-0	-	-	6791	2611	Lillis	Rafferty	Tanser	Bennett	Eastham	Lancashire
Sat 10 Jan	Bradford City	W 2-1	34	8	13571	728	Lillis	Rafferty	Tanser (60)	Bennett	Eastham	Lancashire
Sat 17 Jan	CRAWLEY TOWN	W 4-1	37	5	2255	88	Lillis	Rafferty	TANER	Bennett	Eastham	Lancashire
Mon 26 Jan	STOKE CITY (FAC4)	L 1-4	-	-	7443	2056	Lillis	Rafferty	Tanser	BENNETT	Eastham	Lancashire
Sat 31 Jan	Coventry City	D 2-2	38	7	7606	474	Lillis	Rafferty (46)	Tanser	Bennett (27)	Eastham	Lancashire
Tue 10 Feb	Walsall	L 2-3	38	12	3567	183	Lillis	Cannon	Tanser (26)	Allen (75)	Eastham	LANCASHIRE
Sat 14 Feb	Peterborough United	L 1-2	38	15	5163	220	Lillis	RAFFERTY	Bunney	Lancashire	Eastham (45)	O'Connell
Sat 21 Feb	CHESTERFIELD	W 1-0	41	13	2967	553	Lillis	Rafferty	Kennedy	Rose	Lancashire (13)	O'Connell
Tue 24 Feb	SHEFFIELD UNITED	L 1-2	41	13	3574	1677	Lillis	Rafferty	Kennedy	Rose	Eastham	O'CONNELL
Sat 28 Feb	Bristol City	L 0-1	41	15	11841	359	Jones	Rafferty (68)	Kennedy	Bennett	Eastham	O'Connell
Tue 3 Mar	CREWE ALEXANDRA	W 4-0	44	15	1954	222	Jones	Rafferty (60)	Kennedy	Bennett	Eastham	O'Connell
Sat 7 Mar	COLCHESTER UNITED	W 2-1	47	13	2625	137	Jones	Cannon (70)	Kennedy	BENNETT	Eastham	O'Connell
Sat 14 Mar	Fleetwood Town	L 0-1	47	13	3822	854	Jones	Cannon (75)	Kennedy	Bennett	Eastham	O'Connell
Tue 17 Mar	Notts County	W 2-1	50	10	3159	170	Jones	Cannon	Kennedy	Bennett	Eastham	O'Connell
Sat 21 Mar	SCUNTHORPE UNITED	W 3-1	53	8	2738	341	Jones	Cannon	Kennedy	Bennett	Eastham	O'Connell
Tue 24 Mar	Oldham Athletic	L 0-3	53	8	5322	1319	Jones	Cannon	Kennedy	Bennett	Eastham	O'Connell
Sat 28 Mar	YEOVIL TOWN	W 2-1	56	6	2650	154	Jones	Cannon	Kennedy	BENNETT	Lancashire	O'CONNELL
Fri 3 Apr	Preston North End	L 0-1	56	7	12288	1063	Lillis	Cannon	Tanser	Bennett	Eastham	Kennedy
Mon 6 Apr	PORT VALE	W 1-0	59	7	2948	405	Jones	Cannon (78)	Rafferty	Bennett	Eastham	Kennedy
Sat 11 Apr	Doncaster Rovers	D 1-1	60	7	5695	517	Jones	Cannon	Rafferty (54)	Bennett	Eastham	Kennedy
Tue 14 Apr	SWINDON TOWN	H	7.45									
Sat 18 Apr	Gillingham	A	3.00									
Tue 21 Apr	LEYTON ORIENT	H	7.45									
Sat 25 Apr	MILTON KEYNES DONS	H	3.00									
Sun 3 May	Barnsley	A	12.15									

Fixtures subject to change

KEY

Home Games **BOLD CAPITALS**

Time of Substitution (45)

Player Booked

Player Sent Off

Goals scored eg **ANDREW 2**

					Substitutes						
Bennett	Lund	Donnelly (64)	Dane	Henderson	Andrew (64)	Vincenti (65)	Bunney (78)	Hery	Eastham	J Logan	Diba
Vincenti	Lund	Andrew (59)	Bunney (59)	Henderson	Donnelly (59)	J Logan (59)	Rafferty (61)	Allen	Eastham	Camps	Diba
Dawson	Lund (46)	Andrew	Bunney	HENDERSON	Hery (46)	Donnelly (64)	Allen	Eastham	Camps	J Logan	Diba (60)
Bennett	Hery (75)	DONE 3 (89)	VINCENTI (84)	HENDERSON	Andrew (75)	Camps (84)	Dawson (89)	Rose	Donnelly	J Logan	Diba
Bennett	Hery (72)	Dane (90)	Vincenti (63)	HENDERSON	Bunney (63)	Dawson (72)	Rose (90)	Andrew	Donnelly	Camps	Diba
Bennett	Hery	Dane (67)	Vincenti (73)	Henderson	Donnelly (67)	Fenelon (67)	Andrew (73)	Rose	Dawson	Camps	Diba
VINCENTI	Hery (82)	DONE (70)	Fenelon (51)	Dawson	Camps (51)	ANDREW (70)	Bennett (82)	Rose	Diba		
Dawson	Hery (56)	DONE (84)	VINCENTI 2 (75)	Henderson	ANDREW (56)	Bennett (75)	Fenelon (84)	Kennedy	Lancashire	Bunney	Diba
Dawson	Bennett (86)	Dane	Vincenti	Henderson	Kennedy (44)	Fenelon (86)	Andrew (86)	Hery	Lancashire	Bunney	Diba
Dawson	Hery (83)	DONE (79)	Vincenti (89)	HENDERSON	Fenelon (79)	Andrew (83)	Bennett (89)	Kennedy	Lancashire	Bunney	Diba
Dawson	Hery (59)	Dane (90)	Vincenti	HENDERSON	Bunney (59)	Bennett (76)	Bell (90)	Kennedy	Lancashire	Rose	Diba
Dawson	Hery (46)	DONE 2 (84)	VINCENTI	Henderson	Lancashire (33)	Cannon (46)	Bunney (84)	Andrew	Kennedy	Rose	Diba
Dawson	Lund (55)	Dane	Vincenti (68)	Henderson	Andrew (55)	Bunney (68)	Hery (72)	Bennett	Kennedy	Rose	Diba
Cannon (58)	Hery (76)	Dane	Vincenti	Henderson	Muldoon (58)	Andrew (76)	Bennett	Kisimba	Diba		
Dawson (86)	Rose	Dane (79)	VINCENTI	Henderson	Andrew (79)	Lund (86)	Hery	Lancashire	Rafferty	Muldoon	Diba
Dawson (73)	LUND	Dane	VINCENTI (65)	Henderson	Rose (40)	Andrew (65)	HERY (73)	Lancashire	Rafferty	Muldoon	Diba
Dawson	Lund	Dane (81)	Tanser	HENDERSON 2	Andrew (66)	Bunney (81)	Hery	Lancashire	Rafferty	Muldoon	Diba
Dawson	Lund	DONE	Rose	HENDERSON	Lancashire (88)	Rafferty (82)	Andrew (88)	Camps	Noble-Lazarus		Diba
Dawson	Lund	Dane	Rose	Henderson	Rafferty (59)	Bunney (63 (87))	Andrew (87)	Noble-Lazarus	Cannon	Camps	Lillis
Dawson	Bennett	Andrew (62)	Dane	Rose (68)	Lund (62)	Noble-Lazarus (68)	Muldoon (68)	Lancashire	Hery	Cannon	Lillis
Dawson	Lund	Muldoon (68)	Bennett	Dane	NOBLE-LAZARUS (55)	Allen (68)	Andrew (68)	Tanser	Cannon	Hosler-Clegg	Lillis
Dawson	Lund	Andrew (68)	DONE	Noble-Lazarus	Tanser (45)	Rafferty (68)	Hery	Muldoon	Cannon	Hosler-Clegg	Lillis
Dawson (23)	Cannon	Muldoon (79)	NOBLE-LAZARUS (87)	Henderson	Hery (23)	Lancashire (79)	Andrew (87)	Rafferty	Rose	J Logan	Lillis
Dawson (74)	Lund	Muldoon (74)	Noble-Lazarus	Henderson	Hery (73)	Cywka (74)	Andrew (74)	Lancashire	Rose	Cannon	Diba
Dawson	Hery (71)	Andrew (74)	Vincenti	Henderson	Cywka (71)	Muldoon (74)	Noble-Lazarus	Camps	Lillis		
Dawson	LUND (84)	VINCENTI (75)	Dane	HENDERSON	Andrew (75)	Hery (84)	Noble-Lazarus	Cywka	Cannon	Camps	Lillis
Dawson	Lund (78)	VINCENTI	DONE 3	Henderson	Hery (78)	Andrew (82)	Noble-Lazarus	Cywka	Cannon	Camps	Lillis
Dawson	Lund	VINCENTI (84)	Dane	HENDERSON (88)	Lillis (5)	Bennett (84)	Andrew (88)	Hery	Noble-Lazarus	Cywka	Camps
Dawson	Lund (9)	Cywka (70)	DONE	Henderson	Cannon (9)	Andrew (70)	Noble-Lazarus (86)	Allen	Hery	Camps	Diba
Allen	Hery (64)	Vincenti (76)	Dane	Henderson	Andrew (64)	Camps (64)	Cywka (76)	Bennett	Tanser	Noble-Lazarus	Diba
Allen (90)	Camps (83)	VINCENTI	Dane	J Logan (70)	Bunney (70)	Cywka (83)	Andrew (90)	Rose	Hery	Cannon	Diba
Dawson	Camps (83)	VINCENTI	Dane	Henderson (66)	Rose (60)	J Logan (66)	ANDREW (83)	Hery	Bunney	Cannon	Diba
Dawson	Camps (87)	Vincenti (31)	Dane (89)	HENDERSON 2	ANDREW (31)	Allen (87)	Noble-Lazarus (89)	Rose	J Logan	Brandy	Diba
Dawson	Camps (63)	Vincenti (58)	Dane (55)	Henderson	Andrew (55)	Noble-Lazarus (58)	Allen (63)	Rose	J Logan	Bunney	Diba
Dawson	Allen	Vincenti	CAMPS (82)	Henderson	ANDREW (27)	Noble-Lazarus (46)	Rose (82)	J Logan	Bunney	Brandy	Diba
Dawson	Camps (26)	VINCENTI	Andrew	Henderson	Bunney (26)	O'Connell (26)	J Logan (75)	Rafferty	Rose	Noble-Lazarus	Diba
Dawson	Allen (65)	Vincenti	Noble-Lazarus (45)	Henderson	Rose (45)	Camps (45)	Andrew (65)	J Logan	Cannon	Bell	Diba
Dawson (46)	J Logan	Vincenti	Bunney	HENDERSON	Eastham (13)	Hery (46)	Noble-Lazarus	Cannon	Bell	Brandy	Diba
Hery	J Logan (31)	Vincenti (68)	Brandy (55)	Henderson	Noble-Lazarus (31)	Bell (55)	Bennett (68)	Bunney	Allen	Tanser	Diba
Allen	Rose	Vincenti	Bunney (76)	Henderson	Bell (68)	Brandy (76)	Hery	Noble-Lazarus	Tanser	J Logan	Lillis
Allen	Rose	Vincenti	BUNNEY 2	HENDERSON 2	Tanser (60)	Bell	Brandy	Hery	Noble-Lazarus	J Logan	Lillis
Allen	Rose	Vincenti	Bunney (78)	HENDERSON	Dawson (70)	Noble-Lazarus (78)	Tanser	Brandy	Hery	J Logan	Lillis
Allen	Rose	Vincenti (66)	Bunney (71)	Henderson	Tanser (66)	Brandy (71)	Lancashire (75)	Dawson	Hery	Noble-Lazarus	Lillis
Dawson	Allen	VINCENTI	Rose	HENDERSON	Tanser	Bunney	Lancashire	Brandy	Hery	Noble-Lazarus	Lillis
Dawson (73)	Allen	VINCENTI	ROSE	HENDERSON (90)	Noble-Lazarus (73)	Bunney (90)	Lancashire	Tanser	Brandy	Hery	Lillis
Dawson (43)	Allen (38)	Vincenti (20)	Rose	Henderson	Noble-Lazarus (20)	Hery (38)	Lancashire (43)	Tanser	Bunney	Brandy	Lillis
Tanser (63)	Camps (66)	Bunney	Rose	Henderson	Rafferty (63)	Noble-Lazarus (66)	Hery	Brandy	J Logan	Bell	Lillis
Hery (64)	Rose	Bunney (70)	Vincenti (79)	Henderson	Noble-Lazarus (64)	Andrew (70)	Brandy (79)	Rafferty	Camps	Diba	
Hery (59)	Rose	Noble-Lazarus (60)	Vincenti	Henderson	ANDREW (59)	J Logan (60)	Camps (78)	Brandy	Barry-Murphy	Hooper	Lillis
Allen	Rose	J Logan (67)	Vincenti	HENDERSON	Camps (54)	Andrew (67)	Hery	Noble-Lazarus	Bunney	Brandy	Diba

APPEARANCES & STATISTICS



CORRECT AT 13/4/15

Player	14/15 League		14/15 Other		Dale Career League		Dale Career Other		Dale Career Total		Overall Career Total	
Allen	29(1)	-	4(2)	-	55	6	10	-	65	6	65	6
Andrew	4(24)	5	2(7)	1	28	5	9	1	37	6	267	23
Barry-Murphy	-	-	-	-	65	1	9	-	74	1	431	15
Bell	(3)	-	-	-	3	-	-	-	3	-	3	-
Bennett	30(5)	2	6(1)	1	90	4	14	1	104	5	129	6
Brandy	1(3)	-	-	-	4	-	-	-	4	-	157	21
Bunney	9(8)	2	1(2)	-	39	6	6	-	45	6	45	6
Camps	5(5)	1	2(1)	-	12	1	4	-	16	1	16	1
Cannon	11(2)	-	1	-	13	-	1	-	14	-	14	-
Collis	-	-	-	-	-	-	-	-	-	-	109	-
Cywka	1(2)	-	(2)	-	3	-	2	-	5	-	136	15
Dawson	27(3)	-	6	-	30	-	6	-	36	-	422	20
Diba Musangu	(1)	-	-	-	1	-	-	-	1	-	1	-
Done	23	10	7	4	94	15	16	5	110	20	301	28
Donnelly	1(2)	-	(1)	-	78	13	8	-	86	13	196	37
Eastham	36(1)	1	8	-	52	1	13	-	65	1	150	3
Fenelon	(4)	-	1	-	4	-	1	-	5	-	20	1
Henderson	39	19	6	-	96	33	13	1	109	34	388	68
Hery	12(8)	1	6(1)	-	32	2	9	-	41	2	41	2
Jones	10	-	-	-	10	-	-	-	10	-	213	-
Kennedy	17(1)	-	1	-	156	9	20	-	176	9	452	16
Lancashire	13(5)	1	7	1	56	1	13	1	69	2	185	4
Lillis	12(1)	-	3	-	128	-	17	-	145	-	204	-
C Logan	19	-	6	-	19	-	6	-	25	-	183	-
J Logan	3(3)	-	1(1)	-	11	-	2	-	13	-	13	-
Lund	11(2)	2	4	-	53	10	9	1	62	11	114	16
McGinty	-	-	-	-	1	-	-	-	1	-	18	-
Muldoon	2(1)	-	1(2)	-	3	-	3	-	6	-	6	-
Noble-Lazarus	6(9)	1	(2)	1	15	1	2	1	17	2	70	5
O'Connell	28(1)	5	2	-	67	5	9	-	76	5	100	5
Rafferty	25(3)	1	6(2)	-	80	1	13	1	93	2	93	2
Rose	23(5)	1	5	-	84	7	10	1	94	8	502	35
Tanser	24(3)	1	6	-	28	1	6	-	34	1	34	1
Vincenti	31(1)	12	7	3	74	17	14	5	88	22	206	38

WHEN DALE SCORE

WHEN DALE CONCEDE

CARDS



HOW DALE SCORE



HEADER



LEFT FOOT



RIGHT FOOT



OWN GOAL



FREE KICK



PENALTY

SPONSOR A GOAL!



Mike Rowley & Caroline Fogarty <i>"We're on our way up by Hill & Dale!"</i>	50p	Faggi 18 RIP <i>"Staying Up! Dale are staying up!"</i>	50p
Bill Crawford <i>"In memory of Vinny Mullins"</i>	50p	Mr & Mrs P. Oliver <i>"Let's get as many wins as possible to push for the Championship"</i>	£10 per 3 points
Cleggie <i>"Keep on scoring"</i>	50p	Richard & Sue Bott <i>"Same again, lads"</i>	£1
Terry Moore <i>"Bristol Exile"</i>	50p	Graham Morris <i>"Up The Dale!"</i>	£2
Dave & Barbara Crossley <i>"Hasta La Victoria Siempre"</i>	£1	Nick Johnson <i>"Come on Rochdale!"</i>	50p
Steve Derbyshire <i>"Go For Goal!"</i>	50p	Ollie Makin per Jamie Allen goal	£1
South Manchester & Cheshire (SMAC) Rochdale Supporters <i>"SMAC your goals in and make us pay!"</i>	£1	David J. Gartside <i>"It gives me a buzz to see the net bulge"</i>	50p
Kath Campbell	£2	Nigel MacDonald <i>"The Messiah's second coming delivered us back to the Promised Land. Residency would be Utopic"</i>	50p
Judith Quick <i>"Up The Dale!"</i>	£1	Mavis Shellard <i>"Thank you for 13/14, I look forward to 14/15"</i>	50p
Ken Fletcher <i>"Come on Team Rochdale, we can do it again!"</i>	50p	David, Graham & Paul Veevers	£1
Geoff Cheetham <i>"Up The Dale!"</i>	£2	Hampshire Dale <i>"We're just soft southern persons"</i>	£1
The Johnson Family <i>"Up The Dale!"</i>	£1	Ian, Paul, Darren & Mick <i>"Best wishes to the playing staff and management team on our return to League One"</i>	£1
Rod & Gill Brierley	£2	Jo Wild	£1
Sylvia & Harold Barton <i>"Onward and upward"</i>	50p		
Francis Finnigan <i>"So proud to be a Dale fan. Up The Dale!"</i>	50p		
Steve & Erika Crossley, Dorset <i>"Peace, smiles and Up The Dale!"</i>	50p		

RUNNING TOTAL £1916.00



Goalkeeper
Tom Heaton

Defender
Stephen Darby

Defender
Kevin Amankwaah

Defender
Alan Reeves

Defender
Michael Rose

Midfielder
Temitope Obadeyi

Midfielder
Ray McHale

Midfielder
Alan McLoughlin

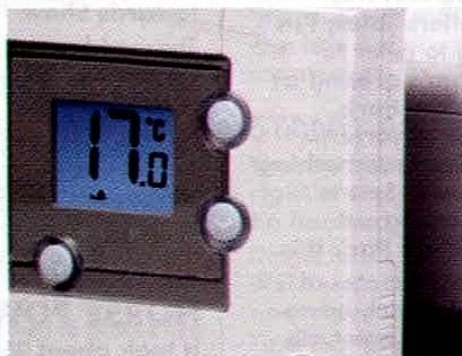
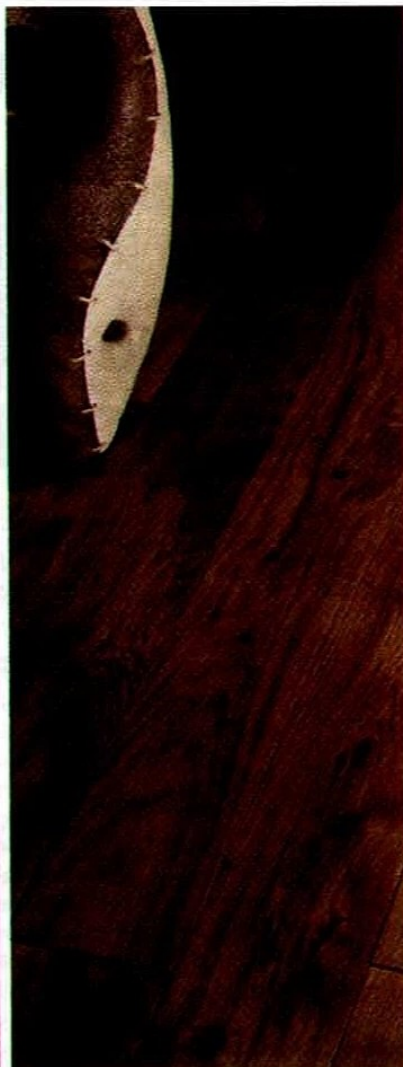
Midfielder
Derek Hall

Forward
David Ball

Forward
Ashley Grimes

THE METEAM

**THE ROCHDALE/
SWINDON TOWN XI**



much more than just timber

Doors, decking, flooring, plumbing and heating... there's so much more on offer at your Howarth Timber & Building Supplies branch in Rochdale than simply timber. Visit us for the latest products at the lowest trade prices, backed up by the specialist knowledge, advice, and customer service that we are known for.



**HOWARTH TIMBER &
BUILDING SUPPLIES**
ROCHDALE

Tel. 01706 710 962 Email. sales.rochdale@howarth-timber.co.uk

Come and see us: Milnrow Road, Rochdale, Lancs OL16 2AA

Visit our comprehensive website. www.howarth-timber.co.uk

TRAVELLERS' TALES

Tuesday 24th March 2015
Sky Bet League 1

**OLDHAM ATHLETIC 3
ROCHDALE 0**



It was time for the shortest trip of the season to take on Oldham Athletic with the tantalising prospect of a top-six place up for grabs should Dale pick-up three points.



DEPARTURE

Throughout this Travellers Tales, I'm going to refer to Oldham's ground as **Boundary Park**. I think its current moniker is something to do with Sports

Direct, but I doubt they will be handing out oversized mugs on entry, so Boundary Park it is.

With it being so close to home, it really was a case of "I'll make my own way to Oldham". I wasn't literally on my own, as Dingle emerged from his sickbed to eventually see a match, but there was no messing about driving to R17's house for a change.

I told Dingle I'd pick him up in the centre of Littleborough at 6.30pm, but on my way I dropped a clanger; I called into Sainsbury's for an Observer.

Anybody who lives in Littleborough can probably predict what's coming next! Yes, there was a queue in Sainsbury's.

In fact, there's always a queue in Sainsbury's, no matter what time it is. If they didn't spend so long asking "Have you got a bag?" and "Have you got a Nectar Card?" there wouldn't be as many queues!

Sainsbury's

Enjoy queuing?

Still, while queuing, I had a quick glance at the back page of the Ob and while the report on the Scunthorpe match made for good, positive reading, it was tempered by an unnecessary column commenting on something that was shouted out from the stands.

It's a shame the local press can't be wholly supportive instead of giving fans' shouts and the subsequent reactions column inches.

SHAW THING

It's an easy route from Littleborough to Boundary

Park, firstly travelling past Hollingworth Lake and then through the metropolis that is Milnrow towards Shaw.

The road from Milnrow to Shaw should be renamed Chaffey Ave, as the popular TVOS contributor used to live at one end of that route, before tying the knot and moving to the other.

Just 50-yards from his front door in Shaw is 'Taff's Newsagents', but if Chaff had anything about him, he'd be getting them to change the name and give him a share of the profits.

HORSE POWER!

It took about 25 minutes to get to Oldham, which I reckon is the shortest time I've ever taken to an away game. At least I now know how Dundee and Dundee United fans feel!

I parked in the same spot as on our previous two visits, before we strolled leisurely down Sheepfoot Lane towards the ground.

There were an unusually high number of police horses around compared to what you see at most Dale games. In fact, one police horse would be a high number, in this case.

I needed my wits about me walking down Sheepfoot Lane. Not because there were Oldham fans making their way to the wrong end again, but because these police horses and made some random deposits!

WARD SISTER

Royal Oldham Hospital is next to Boundary Park and in the dim and distant past (1985), my sister did her nurse's training there after deciding working in the wages office at TBA was too boring.

I was telling this tale to Dingle, who had also been there over the last year or so with his young son, and I wondered if any other ground had a hospital so close.

Once inside Boundary Park I did what I always do at an away game – I updated my Facebook location. I'm not really a social network animal, but I like to make sure people know I'm still following Dale away.

Anyway, within minutes my sister had replied to my location, saying how she had lots of happy times at the hospital and how she used to be able to see Oldham training and playing from the hospital windows.

I think they had the plastic pitch back then and I can just see her ogling the likes of Andy Ritchie and Andy Barlow while she's supposed to be reading a biology book!

EASY ENTRY

Even though there were 1,300 Dale fans in attendance, there were no problems in gaining a quick and easy entry to the ground.

The turnstiles, like most of Boundary Park, are quite exposed and I recalled a previous trip I made there when entry to the ground was anything but easy.

It was December 1984 and Dale were due to play at Chester, but the game was postponed. Myself and a mate noticed Oldham were at home to Manchester City in Division Two, so we hopped on the bus at Littleborough and eventually arrived at Boundary Park at around half-past-two.

We decided to go into the City end, but at half-past-three we were still queuing outside. We had also missed a City goal.

It was half-time before we got into the ground, but we managed to see City's second goal that clinched a 2-0 win.

I remember being squashed on the Rochdale Road End, which was an open terrace at the time. It was December in Lancashire, so it was probably raining as well.

City had around 10,000 fans at the game, as the attendance is recorded as 15,000 (exactly) and Oldham had around 4,000 for their two home fixtures either side.

It was a pretty frightening experience for a 15-year-old whose footballing travels had been confined to places like Spotland and The Shay, but I was glad I did it.

And I even saw City's first goal later that night, as the game was actually shown on the Match of the Day highlights!

"THIS LOOKS LIKE A GOOD GROUND!"

Both Dingle and I were desperate for the loo, but while in there we heard a very strange comment.

"This looks like a right good ground from up here!" blasted someone very loudly in a Southern accent.

Dingle and I looked at each other and agreed that this Dale fan, whoever he was, probably hadn't been down into the stand yet.

PRIVATE DICK

We took up a good spot to the right of the goal and coincidentally ended up next to some of our regular travelling companions in TTYear, Young Jack and Curly Claire.

With them was a Sandy Laner called Neil, who is a



prominent poster on the Dale messageboard. Neil was wearing a very long mac and while I told him he looked like a private detective, Neil suggested he might be a flasher.

I only wish TalkingSutty and D_Alien had been sat in the vicinity!

"I HAD TO PAY!"

Shortly before kick-off I received a text from someone who used to work for Dale, but who is now employed by another club as well as officiating in the Football League.

He wanted to know where we were sat and managed to find us, but wasn't impressed when he arrived.

"I had to pay to get in tonight, Captain!" he said, as though it was my fault.

"Couldn't you get a ticket off one of the officials?" I asked, thinking he was a man of influence.

"I tried all four of them, but they'd all given out their tickets!" he said, indignantly. "So I had to pay TWENTY-TWO QUID!"

R17, who had appeared, had little sympathy.

"It's usually us shelling out to watch the likes of you wave your little flag about!" he said, to put the tin hat on the conversation.

STAND AND DELIVER

There's quite a nice new stand emerging to the right of the away end at Oldham, but when it will be finished, if at all, is anyone's guess.

Dingle forecast it will be like the main stand at Port Vale, which was abandoned three-quarters of the way through when they ran out of money.

Time may prove us wrong, but I'd be very surprised if it doesn't look very similar if we visit Boundary Park again in 2015/16.

THE ACTION

Everything went wrong for Dale in this game and although subsequent results may prove otherwise, it was certainly one to put down as 'one of those nights'.

A week earlier at Notts County we hadn't used any substitutes. This time we had all three on the pitch before half-time!

We even lost Ashley Eastham to another injury 15 minutes from time, but by then it was all academic.

Oldham were 3-0 up thanks to some rather generous defending and after they had recorded the same result at Spotland in November, it was no surprise their fans wanted to play us every week.

TORCHLIGHT

2,000 more Oldham fans saw this game than their fixture at home to MK Dons the previous Tuesday, so it was good to see Dale a star attraction in those parts.

Bizarrely, a large gang of them in one corner of the Chadderton End spent a good five minutes near to full-time waving their mobile phones around to create a torchlight effect. I half-expected Elton John to emerge singing 'Candle in the Wind'!

PETER VINCENTI

ONE OR T'OTHER



TWITTER

or

FACEBOOK

INDIAN

or

CHINESE

CIDER

or

LAGER

ONE DIRECTION

or

NO DIRECTION!

PIZZA

or

PASTA

TOURIST HOLIDAY

or

BEACH HOLIDAY

HOLIDAY WITH THE LADS

or

HOLIDAY WITH THE MISSUS

KEITH HILL

or

HARRY HILL

JACK NORTHOVER

or

JACK DEE

HERBAL LIFE

or

HERBAL TEA

EASTENDERS

Neither!

CORONATION STREET

X-FACTOR

or

BRITAIN'S GOT TALENT

LANCASHIRE

or

YORKSHIRE

LOOKS

or

PERSONALITY

TEA

or

COFFEE

BLUE ROCHDALE SHIRT

or

YELLOW ROCHDALE SHIRT

The **SOCCER FACTORY**

01706 659111

Soccer Factory Leisure Ltd

The Soccer Factory, Former Woolworths DC, Royle Barn Road, Castleton, Rochdale, OL11 3DT

Tel. 01706 659111 or Mobile 07793 673719

The Soccer Factory is an indoor football 5G facility with 9 varying sized 5/6 a-side pitches. Our independent company is open for training from professional football clubs to children's teams, catering for friends just playing around and the more committed teams within our 5-a-side leagues. Why not have a children's party here for your budding football stars?

Recently, Soccer Factory Leisure Ltd opened our new $\frac{3}{4}$ indoor football pitch. This pitch is available to all for training and 8/9 a-side games; with $\frac{3}{4}$ size goals it's great all through the year. Our facility has 'Home and Away' dressing rooms and a licensed bar area - come down to have a look.

Please feel free to contact **Graham Fisher** on **07793 673719** to discuss any potential requirements.

Our current opening times are 9.30hrs to 23.00hrs, 7 days per week, 364 days a year.



We are Oldham's leading Physiotherapy practice and have been established in Uppermill since 1995.

We offer prompt advice and treatment for all skeletal problems and injuries. All staff are Advanced Orthopaedic Practitioners and through our additional qualifications and experience are able to carry out injections and request investigations such as X-Rays, Scans and Blood Tests.

We provide a unique service and in our most recent customer satisfaction survey 100% of those patients who completed the survey would recommend us to others.

10% Discount on first treatment on production of this advert.

18 High Street, Uppermill, OL3 6HX Telephone: 01457 871777.

Email: physio@zen.co.uk Web: www.saddleworthphysio.co.uk

MANAGEMENT SPONSORS 2014-15



Keith Hill

The Kilpatrick Family in memory of Brian Kilpatrick



Chris Beech

The Kilpatrick Family in memory of Brian Kilpatrick



Steve Collis

In Memory of Gerry Dawson

COMMERCIAL NEWS



Contact

Iain Johnstone or Frances Fielding on 01706 753581

or email

[iain@rochdaleafc.co.uk/](mailto:iain@rochdaleafc.co.uk)

frances@rochdaleafc.co.uk

FIXTURE RELEASE DAY – SEASON 2015/16

Next season's fixtures are released on Wednesday 17th June and there has already been interest in sponsoring several matches.

If you want to be contacted on availability or you have a date in mind when you might be celebrating a birthday or another special occasion, get in touch with your details and we will do all we can to meet your requirements.

HOWARTH TIMBER CHALLENGE

The Challenge is itself now looking for a challenge as the crossbar format has certainly run its course and the event could do with a half-time refreshment for next season.

Whilst I am moving on at the end of the campaign, myself and Frances would welcome any ideas from supporters as to what might be a good challenge to take to the pitch at half-time.

We have discounted a Scunthorpe-style challenge due to health and safety issues, but will listen to any ideas from supporters using the contact details above.

MATCHDAY HOSPITALITY MK DONS MATCH SOLD OUT

Hospitality has been enjoyed by several hundred guests already this season and bookings for the remaining games are very busy.

It may be a birthday or a family celebration or a business entertaining staff or customers, we can cater for them all.

There is still availability at the Leyton Orient game next Tuesday, but the MK Dons' fixture is SOLD OUT.

Contact me or Frances to find out more or to reserve your place.

sat 23 may
80s & 90s NIGHT
DJs
Andy "Big H" Hargreaves
Nick Robinson
Zak Thompson
Colin Schofield & guests
TICKETS £5 adv
£7 OTD if available
Doors 7pm

MODSHOPPING
MAYDAY LIVE 2015 - BANK HOLIDAY SUNDAY 24 MAY
DESERT MONKEYS
THE UK'S LEADING ARCTIC MONKEYS TRIBUTE
The Backhanders
Housing Project Hill • The State
DJ Dave Sweetmore & Friends
TICKETS £7 adv • £10 OTD if available
Doors 5pm

PLAYER SPONSORS 2014-15

All players are sponsored for their Home & Away Kit



Josh Lillis

The Kilpatrick
Family in memory
of Brian Kilpatrick



**Michael
Rose**

Reider Haugland
(Norway)



**Ashley
Eastham**

The Dale Bar



**Jamie
Allen**

Ross Pennington



**Stephen
Dawson**

The Club Shop



**Brian
Barry-
Murphy**

Ronan O'Driscoll



**Ian
Henderson**



**Joe
Bunney**

PUBlications
www.pubadvert.co.uk



Johny Diba

The Kilpatrick
Family in memory
of Brian Kilpatrick



**Scott
Tanser**

Inter Malagar



**Sean
McGinty**

DM Buckley



**Peter
Vincenti**

Phil Barton



Matty Lund

Kath Campbell



**Callum
Camps**

Supporters' Trust



**Calvin
Andrew**

Inter Malagar



**Reuben
Noble-
Lazarus**



**Joe
Rafferty**

Saddleworth
Physiotherapy Clinic



**Olly
Lancashire**

All the best for the
season ahead, from
the Belfields in Dubai



**Rhys
Bennett**

Feorgal Tierney



**Bastien
Hery**

Supporters' Trust



**Andy
Cannon**

The Club Shop



**Jack
Muldoon**

The Dale Bar



Joel Logan

Mark, Stuart, Phil &
Alex

Thanks to all our sponsors!



THE RATCLIFFE

BARS & FUNCTION SUITES

is now the Official Venue of Rochdale AFC



We have suites available for all types of occasions, from the perfect wedding & conference venue, to private parties, sportsman's evenings, awards nights and wedding fayres. All are available with catering packages.

The Ratcliffe Bars offers unrivalled facilities and comfort and with over 100 free car parking spaces, makes whatever your conference, function or event is a truly special one.

Open every matchday before and after the game, all profits from The Ratcliffe are ploughed back into the football club so it's the perfect spot for a drink with friends and fellow supporters and for any special occasion.



THE RATCLIFFE BARS & FUNCTION SUITES

SANDY LANE, ROCHDALE, LANCs OL11 5DR

01706 646851

enquiries@ratcliffebars.co.uk www.ratcliffebars.co.uk



Coach Options Ltd

OFFICIAL TEAM COACH

ROCHDALE AFC

TEL. 01706 713 966 FAX. 01706 759 996

700 Manchester Road, Castleton, Rochdale OL11 3JN www.coachoptions.co.uk

THROUGH THE YEARS

5 Years Ago

April 2010

QUAKERS RATTLE ROCHDALE

Rochdale 0, Darlington 1
League Two

Dale continued to drag out their promotion from League Two on a night where one issue was settled at the other end of the table.

A win over Darlington would have guaranteed promotion, while a draw would have made it 99% certain; in the end Dale got neither.

The visitors, bottom of the table, were all-but relegated and despite winning at Spotland, results elsewhere condemned them to the Conference.

There was worse news for Dale fans at full-time as not only would promotion have to wait a while longer, but we had been deposed at the top of the table by Notts County.

The defeat meant Dale had lost three out of four games in April and

failed to score in any of them.

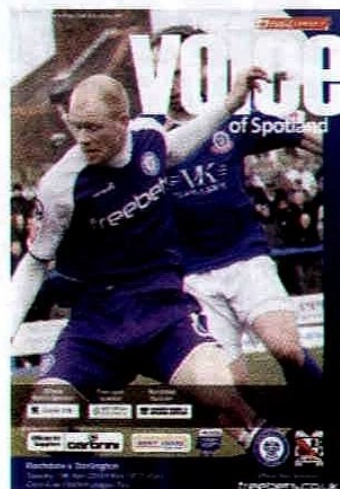
It was a tense time for everyone connected with the club, but the points accrued earlier in the season were still standing Dale in good stead.

Darlington's winner came in a first half largely dominated by Dale. Ten minutes from the interval, Josh Gray crossed from the right and Nathan Mulligan leapt above the defence to power a header past Frank Fielding.

Dale: Fielding, Wiseman, T Kennedy, Taylor, Stanton, Dawson, Obadeyi (Higginbotham), Jones, O'Grady, Dagnall, Thompson

Attendance: 5,371

Referee: O Longford (West Midlands)



Scan the
code
to watch the
action from
this game



SWINDON, who were second in League One, had been held to a 1-1 home draw by Exeter the previous evening. It even took a last minute own goal from Matt Taylor to earn The Robins their point.

Joe Thompson looks for support against Darlington as Dale struggle to clinch promotion

THROUGH THE YEARS 10 Years Ago

April 2005

POSITIVES TO TAKE FROM A DISAPPOINTING RESULT

Rochdale 1, Shrewsbury Town 1 League Two

The gap between Dale and the play-offs remained at four points, but there were now only three games to play to complete the season.

On paper, Shrewsbury's visit to Spotland looked like something of a free hit for Dale, but the visitors were still threatened with relegation and needed a result themselves.

In the event, the point secured The Shrews' league status for the following season, while it left Dale contemplating another season in the fourth tier.

The importance of the occasion made for an exciting encounter, with the midfield battle between Ernie Cooksey and Shrewsbury's Jamie Tolley making the temperature rise even further.

Town arguably had more to play for and made a flying start with a fifth minute goal.

A ball was played to Luke Rodgers, who was brought down by Greg Heald as he made his way across the area.

The experienced Mike Sheron took the penalty and gave Matt Gilks no chance with a well-placed shot into the bottom corner.

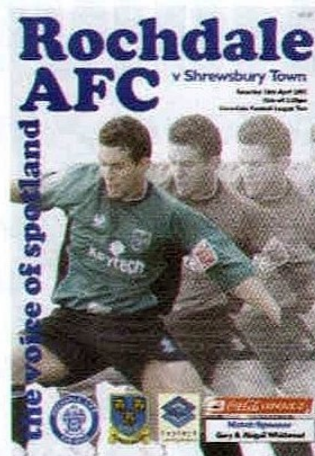
Dale levelled on 40 minutes with a fine strike from Rickie Lambert.

Cooksey won the ball after a fierce tackle on Tolley and it ran loose for Lambert to take one touch and unleash a fine shot that Joe Hart could only palm into the top corner.

Dale: Gilks, Evans, Gallimore, Cooksey, Griffiths, Heald, Bertos (Clarke), Jones, Lambert, Richards, Goodall (McGivern)

Attendance: 3,142

Referee: A Kaye (Wakefield)



Scan the code
to watch the action
from this game



SWINDON
cemented a
mid-table place
in League One
after a goalless
draw at Hull.

Rickie Lambert is congratulated by
Gareth Griffiths and Gary Jones after his
equaliser against Shrewsbury

THROUGH THE YEARS 20 Years Ago

April 1995

GREAT SCOTT - BUT ONLY AS FAR AS DALE WERE CONCERNED

Walsall 0, Rochdale 0
Division Three

Dale had already lost twice to Walsall in the 1994/95 season, so the goalless draw they earned at the Bescot Stadium on Easter Saturday was something of a result.

Our 3-0 FA Cup defeat there earlier in the season came on an afternoon when the fans really turned on manager Dave Sutton, but this time there was little for either set of supporters to get excited about.

Indeed, the most effort shown by the home fans came when the public address announcer named Scott Houghton as Man of the Match.

Boos and jeers rang out from the stands, as Houghton was the major factor behind the game remaining scoreless.

He wasted most of Walsall's best chances with shots that cleared the bar and he was so wayward that every shot seemed higher than the previous one!

Houghton was able to move onto those chances as Walsall's two main goalscoring threats, Kyle Lightbourne and Kevin Wilson, were well-shackled by Dale's central defensive pairing of Paul Butler and Peter Valentine.

Dale created little at the other end and not only was a point secured, they extended their unbeaten away record to seven games and Chris Clarke kept another clean sheet.

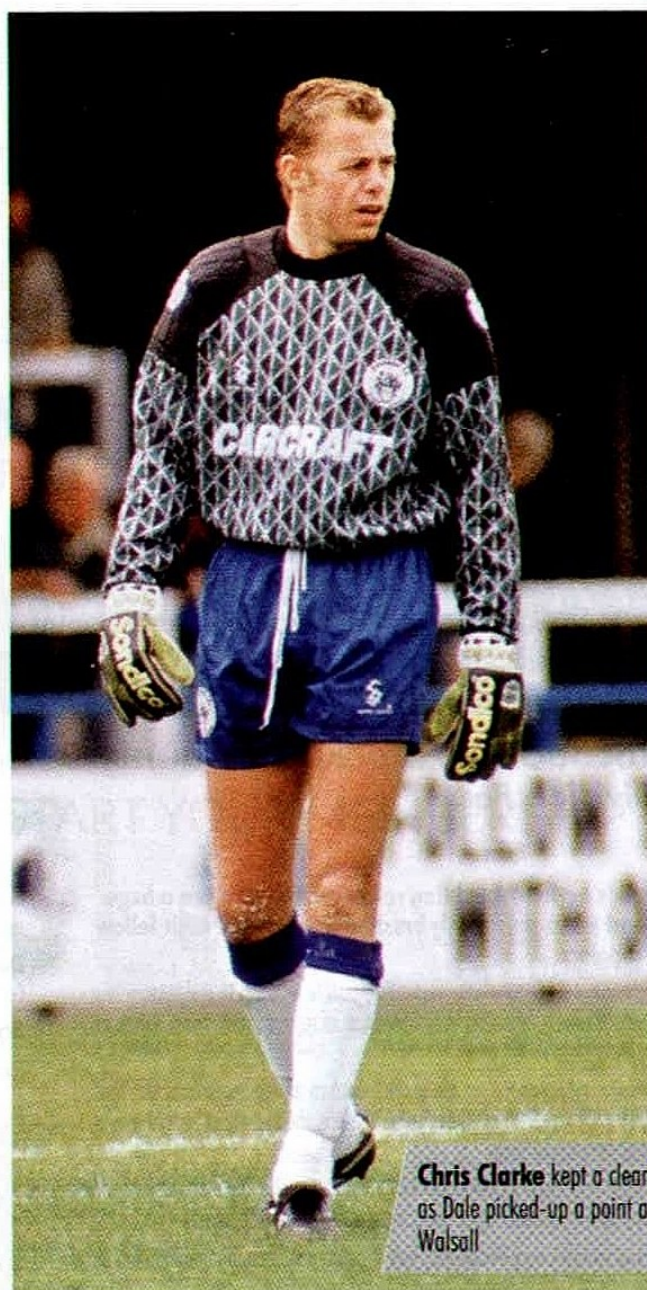
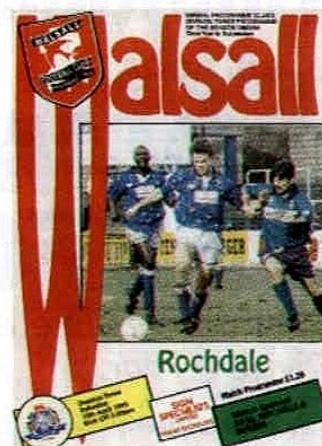
Rochdale: Clarke, Thackeray, Peake, Martin, Valentine, Butler, Thompson, Deary, Shaw (Bowden), Whitehall, Ryan

Att: 3,766

Referee: UD Rennie (Sheffield)



SWINDON boosted their hopes of avoiding relegation from the First Division with a 2-2 draw at play-off chasing Sheffield United. Ty Gooden and Martin Ling scored in each half for The Robins.



Chris Clarke kept a clean sheet as Dale picked-up a point at Walsall

THROUGH THE YEARS 30 Years Ago

April 1985

COMMAND PERFORMANCE

Rochdale 2, Exeter City 0
Division Four

Dale extended their unbeaten run to five games with a comfortable home win over Exeter.

Vic Holom's side had collected 11 points out of a possible 15 to move them out of the bottom four and climbing slowly away from a re-election application.

Right-winger Dave Thompson was the star performer for Dale. Exeter simply couldn't handle his pace and direct approach on the flank and it was no surprise when he was involved in the crucial second goal.

The second period was less than a minute old when

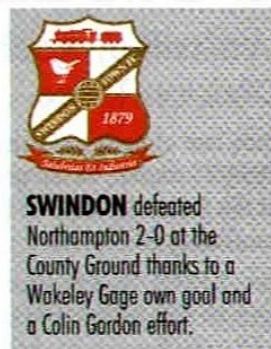
Thommo's centre from the right was hacked away by Nicky Marker, only for Ian McMahon to score with a rasping drive.

Barry Diamond had given Dale the lead just after the quarter-hour mark when he scored from close range as City struggled to deal with Paul Heaton's corner from the right.

Dale: Redfern, Robinson, Grant, McMahon, Cooke, Dwyer, Thompson, Diamond, Taylor, Chapman, Heaton

Attendance: 1,181

Referee: T Mills (Barnsley)



THROUGH THE YEARS 40 Years Ago

April 1975

DALE DISPEL THOSE RE-ELECTION BLUES

Rochdale 3, Stockport County 0
Division Four

Dale's hopes of avoiding re-election were given a huge boost when they easily brushed aside one of their fellow strugglers.

Although it was still mathematically possible to finish in the bottom four, it would take a remarkable combination of results for so many teams to leapfrog Dale in the table.

The disappointing aspect of the performance for the home fans was that Dale only scored three goals, but in the end the margin of victory was of secondary importance.

It took only three minutes for Tony Whelan to shoot Dale ahead with a fine goal after he picked-up a loose ball on the edge of the area.

Three minutes into the second half Whelan was there again, finishing off a corner and Dick Mulvaney header to make it 2-0.

Gary Cooper soon scored the third with a header from Paul Hallows' cross to wrap-up the points.

Dale: Poole, Hallows, Townsend, Fielding, Mulvaney, Hanvey, Ferguson, Cooper, Whelan, Brears, Tobin

Attendance: 1,880

Referee: RN Perkin (Stafford)



Link4Life

fitness

EXCLUSIVE OFFER

ZERO STARTUP FEE FOR SUPPORTERS OF



GYM, SWIM & STUDIO CLASSES

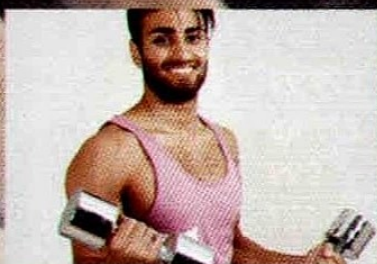
USE THE **BEST FACILITIES** AT THE **LOWEST PRICES**

Your membership will include:

- ▶ **FREE** Gym Induction
- ▶ **FREE** Fitness Classes
- ▶ **FREE** On Your Marks Fitness Programme
- ▶ **FANTASTIC** 'Members Journey'
- ▶ **FULLY** Qualified Instructors
- ▶ **FANTASTIC** Steam Room*
- ▶ **LUXURY** Thermal Suite**

*Only available at selected centres.

**Only available with selected memberships.



GET IN TOUCH TODAY

QUOTE **"THE DALE"** TO START YOUR MEMBERSHIP



Rochdale
leisure centre

01706 924200



Middleton
arena

01706 923170



Littleborough
sports centre

01706 927560



Heywood
sports village

01706 927202

Link4Life

www.link4life.org/fitness



IN PARTNERSHIP WITH
ROCHDALE
BOROUGH COUNCIL

Link4Life is the trading name of Rochdale Boroughwide Cultural Trust. Registered Charity No: 1118610

*T&C's apply.

HELLO ROCHDALE

MEET THE NEW CORSA



Representative Example - New Vauxhall Corsa 1.2 70PS Sting 3dr

23 Monthly Payments	£99.99
Pentagon Price From	£7,746
Deposit (Paid By You)	£99
Guaranteed Future Value / OFP	£6,277
Total Charge for Credit	£929.73
Total Amount Payable	£8,675.77
Borrowing Rate	6.68%

6.9% APR Representative

Pentagon

www.pentagon-vauxhall.co.uk

Queensway, Rochdale, OL11 1TQ

01706 515 060



VAUXHALL

Official Government Test Environmental Data. Fuel consumption figures mpg (litres/100km) and CO2 emissions (g/km). Vauxhall range (excluding Ampera): Urban: 14.4 (19.6) - 67.3 (4.2), Extra-urban: 27.4 (10.3) - 91.1 (3.1), Combined: 20.6 (13.7) - 80.7 (3.5). CO2 emissions: 324 - 94g/km.*

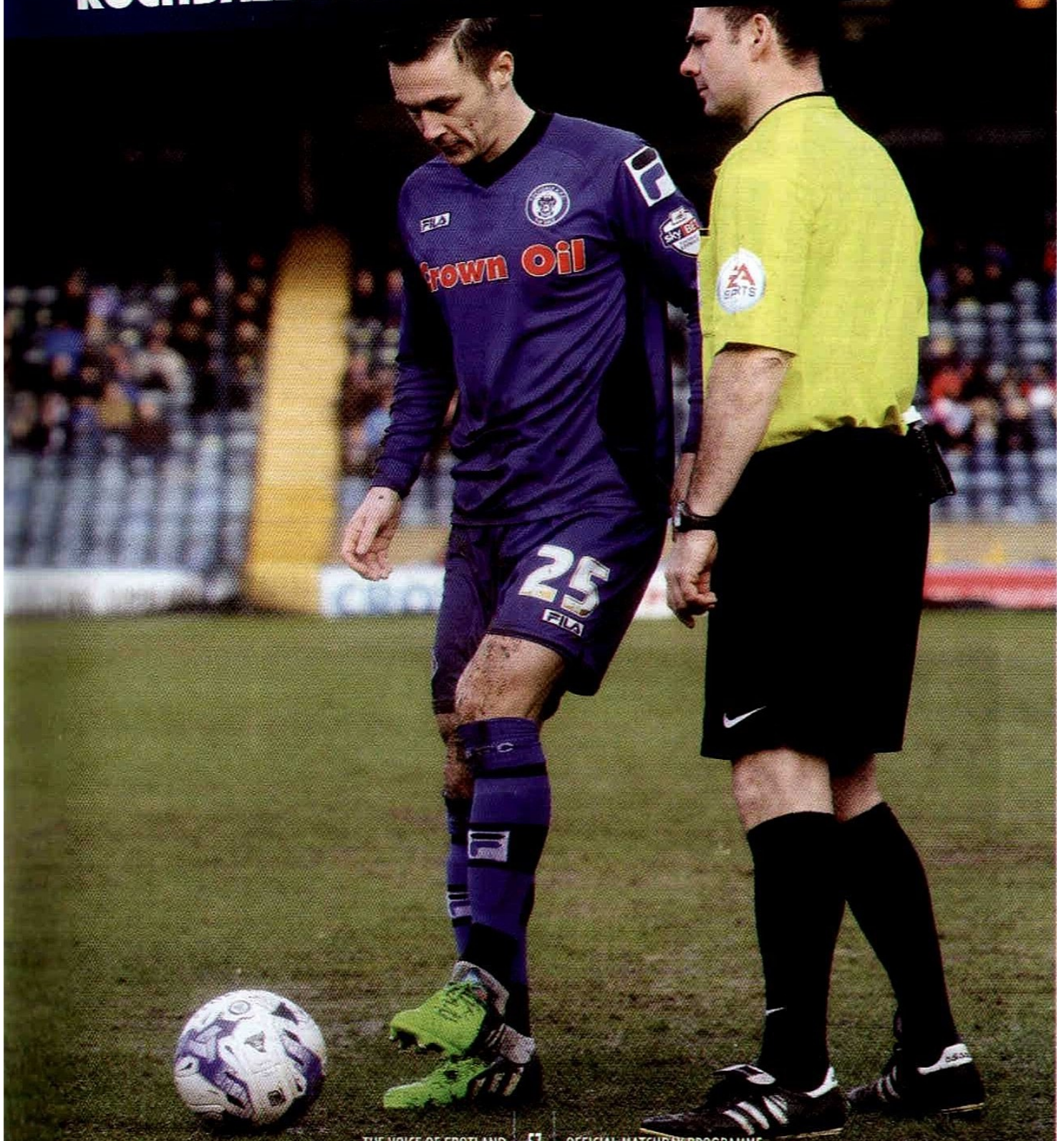
Pentagon Motor Holdings Ltd is a credit broker and not a lender. *Official EU-regulated test data are provided for comparison purposes and actual performance will depend on driving style, road conditions and other non-technical factors. Pentagon is authorised and regulated by the Financial Conduct Authority. Finance is subject to status. Offer cannot be used in conjunction with any other offer. **You will not own the vehicle until all payments are made. 18s and over. Guarantee / indemnity may be required.** Example based on 5,000 miles per annum. Excess mileage charge would apply. Other terms available, please contact us for more details.

DALE ACTION

Saturday 28th March 2015
Sky Bet League 1



ROCHDALE 2 YEOVIL TOWN 1



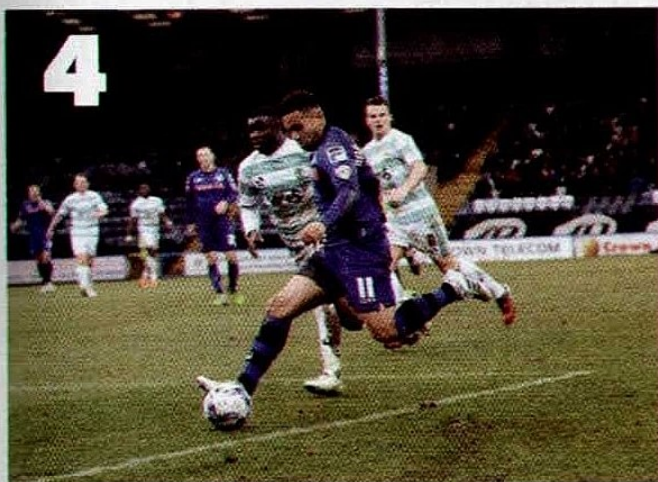
DALE ACTION

Saturday 28th March 2015
Sky Bet League 1



ROCHDALE 2 YEOVIL TOWN 1

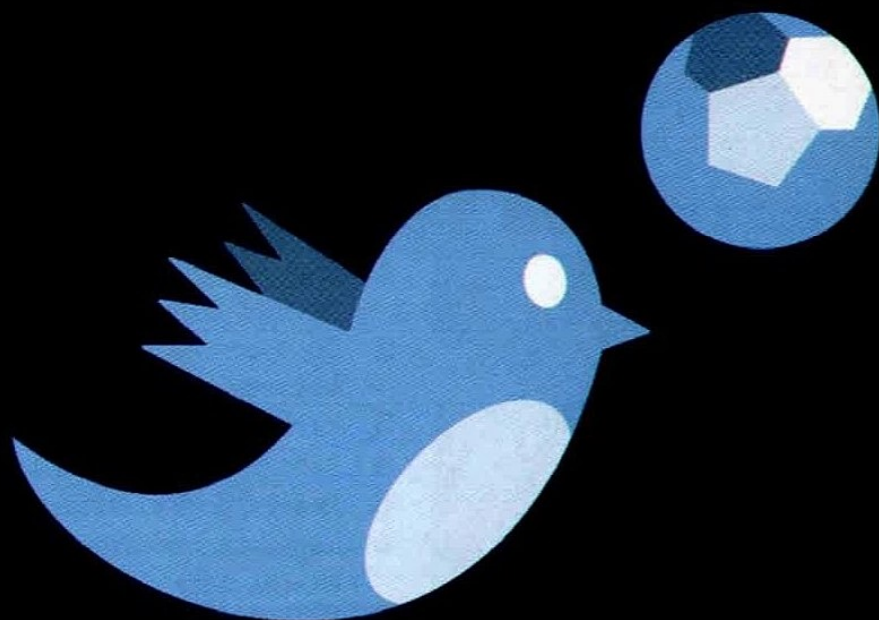




- 1 Rhys Bennett bypasses the crowded goal area to shoot Dale into the lead
- 2 Rhys Bennett comes under pressure from Stephen Arthurworrey
- 3 Ian Henderson is brought down by Stephen Arthurworrey
- 4 Reuben Noble-Lazarus chips over a cross from the left
- 5 Joe Bunney glances a header towards goal
- 6 Ian Henderson somehow scoops a late chance over the bar
- 7 The Yeovil defence double-up on Ian Henderson

Pictures by Daniel Youngs





PLAY YOUR PART **@FOOTBALL_LEAGUE**

Have your say and keep up with all the action and official news from Football League HQ, as we tweet the hottest issues of the day. Plus, don't miss out on our regular weekly fun and games with #WheresJon & #WheresJackie!

To follow us, go to www.twitter.com/football_league or to send us a message, tweet @football_league



SCRUTATOR

More ponderings from our pedantic pundit's pulpit

What links tonight's visitors to Oldham, Barnsley and Bradford – three other clubs to have played at Spotland in league action this season?

They are all what you might class as surprising members of the Premier League at some point in recent history. They all had to punch massively above their weight to get there, winning the hearts of football fans across the country in the same way as Bournemouth might do next season.

However, the three clubs have struggled since leaving the Premier League, with Swindon and Bradford even having spent time in football's basement league.

Whether or not the time spent in the Premier League is responsible for these clubs being locked in long subsequent struggles is a question only the likes of a Swindon fan could answer. Did they go a bridge too far some 20 years ago?

Tonight they come to Spotland looking likely to reach the play-offs for promotion back to The Championship and then the cycle starts again. Next season, if they do go up, The Robins will, I assume, be hoping to regain the Premier League place they last coveted in 1994.

If they are successful, they might get to spend one season in the top flight before a tumble and if history were to repeat itself, you can but only wonder, "Was it all worth it?"

Bizarrely, a similar scenario has been playing out at Spotland this season. Our promotion hopes, though slim, are not mathematically extinct – although they might be by 9.45pm tonight!

Listening to fans and chatting over pints in the pub, I've been astonished to discover that opinion on whether our club should be going for promotion is divided!

There is the camp who argue that the step-up is too great and to attempt it might set the club back like it did for Bury, Stockport and, more recently, Tranmere. They also argue that off the pitch the club still isn't geared-up for that level.

On the other hand, the 'go for it' camp point towards Doncaster and Crewe at what could be achieved.

Personally, I just hope we win every game we play and league competition will then dictate where we end up.

Having said that, I definitely don't want to see Dale in the Premier League. Can you

imagine the messing around with kick-off times, the cost to get in and the inevitable thumpings we'd be on the end of? So everyone must have their own realistic cut-off point at which they think, 'Right. That's it. That'll do for me.'

At which point there is no reason in being a fan, because the fire in our bellies will extinguish itself as, by definition, we always want our team to win every game in which we play.

Swindon fans are almost unique in that they've gone from the old Division Four, all the way to the top flight, only to return to the bottom rung and now they are on the rise again. Their fans must have been on more different grounds in this country than John Motson and Barry Davies combined!

I think only Bradford share this record with Swindon, although you might be able to add Oldham to the list in the near future.

Back in the early 1980s, Rochdale v Swindon was a regular fixture and trips to The County Ground were feared. When I started watching Dale our first four trips to Wiltshire all ended in defeat with an aggregate of 12-3, we were certainly due our first-ever three points there last October when Bastien Hery nodded home a late winner!

For the record, Swindon are one of ten clubs to have played Dale in League action having once graced the Premier League.

Can you name the other nine?

"I definitely don't want to see Dale in the Premier League. Can you imagine the messing around with kick-off times, the cost to get in and the inevitable thumpings we'd be on the end of?"

DALE IN THE COMMUNITY SPORTS TRUST

Telephone: 01706 643836

Email: keith.hicks@rochdaleafc.co.uk

Welcome tonight everybody, especially our friends from Swindon who have made a long midweek trip from Wiltshire to be with us.

FUTSAL SOCCER AM CUP

The draw for the quarter-finals has finally been made, pitting us against Middlesbrough, Bradford City and Sheffield United at St George's Park Football Centre, the home of the FA.

Two teams from the group will go onto the semi-finals and final in May in London, so our best wishes go to the lads and hopefully we will be making the trip down south and a possible week in Barcelona as winners of this prestigious Football League national competition.



BTEC EXTENDED DIPLOMA IN SPORTS PERFORMANCE AND EXCELLENCE

(Equivalent to three A Levels)



OPEN DAY

TVS
Education
Ltd.

at Rochdale AFC on Thursday 14th May, 6.00pm – 9.00pm

- Skills demonstration, plus Futsal matches on the first team pitch, followed by a short presentation in the Main Lounge to promote the programme
- Chance to see what opportunities are available on the Futsal/Football Scholarship at Rochdale AFC
- For current Year 11 students at school
- Two-Year Course commencing September 2015
- Train and study at Rochdale AFC
- Play in National Futsal League against Professional Football Clubs/Sky's Soccer AM Cup
- Gain relevant qualifications and coaching awards to work in the sports industry

Pathways are:

University/Foundation Degree/Further Education
(Currently seven from twelve Year 13 students have successfully applied to Universities)

Playing Career

(Professional contracts in Europe/USA)

Coaching opportunities

(Futsal is being driven by the FA as the way forward in developing young talent)

All young people interested in playing/coaching should just turn up with playing kit and be prepared to be enjoy an educational experience.

(Parents also welcome to see the benefits of this fantastic opportunity)

For information about the programme or how to apply, please contact Keith Hicks on 01706 643836 or 07958 593121

Alternatively, search on Facebook for Dale in the Community Sports Trust for recent events.



DALE IN THE COMMUNITY SPORTS TRUST ATTRACTIONS 2014/15

ROCHDALE AFC SATURDAY CLUBS

Spend a day at Spotland watching Dale play and take part in organised activities

Itinerary:

Meet at Community Office

12.00 – 2.00	Coaching/5-a-sides
2.00 – 2.30	Lunch provided by McDonald's
2.30 – 4.45	Take seat in WMG Stand for match (Specially reserved section)

All supervision through out the day is provided by Football in the Community Staff

Only £10.00

BIRTHDAY TREATS

Have a party to remember at Rochdale AFC with up to 20 of your mates.

You provide the food, we do the rest!
(Alternatively, McDonald's meals on request)
Session involves warm-up and team games, plus 5-a-sides and a tour of Rochdale AFC (supervised by Community Staff Coach)

- Use of Studds Bar for the party for two hours
- Autographed Rochdale AFC ball for birthday boy or girl
- Family tickets for a Rochdale AFC home match
- Goodies bag
- Parties are arranged from Monday – Thursday: 4.00pm – 6.00pm

ONLY £60.00

We are also taking bookings at Saturday home matches (Join with the Saturday Club at £9.00 per person)

FOOTBALL COACHING SESSIONS FUN & COACHING CLUBS AT SOCCER FACTORY (NEAR TESCO)

SATURDAY & SUNDAY FUN & COACHING SESSIONS

10.00am – 12.00pm

Sessions by FA qualified coaches

Fun sessions involving coaching/games/5-a-sides

Only £5.00 per session

TINY TOTS COACHING SESSIONS

(Age 4-6)

Mondays: 4.00pm – 6.00pm

Only £5.00 per session

LITTLEBOROUGH SATURDAY CLUB

Littleborough Community School, Calderbrook Road, Littleborough

5-a-sides throughout the morning

10.00am – 12.00pm every Saturday

Just turn up and play 5-a-sides all morning supervised by a qualified staff member

All boys and girls are put into appropriate age groups

Only £5.00 per session (No booking required)

HOLIDAY COACHING COURSES

Held at EVERY half-term holiday throughout the year

Venues at located at:

Rochdale AC 5-a-side Complex
Littleborough Community School
St Mary's Primary School, Middleton
Siddal Moor Sports College, Heywood
(Subject to alteration, plus other venues to be arranged where possible)

We believe that flexibility is important, so we offer a range of packages:

3/4/5 day courses

Half days (10.00am – 12.30pm) or

Full days (10.00am – 3.00pm)

Come down and enjoy yourself at one of the popular courses, which cater for beginners to talented players.

- Ground tours are arranged plus, when available, Rochdale's AFC superstars are invited to sign autographs and chat to attendees.
- Awards in each age group are presented at the end of the week to:
Most Improved Attender/Skills Winner/Star Performer/Personality
- Free tickets to Rochdale AFC home matches

PROMISING PLAYERS ARE INVITED TO THE CENTRE OF EXCELLENCE

THE INTERNET ACCELERATED

Fibre Optic Broadband from Zen Internet

**Superfast Fibre Optic Broadband
from award-winning Zen Internet**

Voted PC Pro Best ISP for the last nine years



To find out if Fibre Optic Broadband is available in your area
Visit: www.zen.co.uk/fibre-broadband **Call:** 0845 057 8323





DO YOU REMEMBER WHEN?

SEASON 2007/08

DALE BEGAN THE CENTENARY SEASON WEARING A BLACK & WHITE STRIPED SHIRT, SIMILAR TO THAT USED WHEN THE CLUB WAS FIRST FORMED. IT PROVED EXTREMELY POPULAR AMONGST SUPPORTERS EVEN IF WE DID TEND TO WEAR YELLOW MOST OF THE TIME WHEN PLAYING AWAY.

New arrivals included the likes of 'keeper James Spencer and defender Tom Kennedy, with Ben Muirhead and Adam Le Fondre returning on a permanent basis after successful loans the previous season.

An opening day defeat was followed by a controversial loss at Spotland against Chester. The away side snatched victory seconds after Le Fondre appeared to have scored a perfectly good goal, only for it to be ruled out for offside.

The League Cup witnessed two great games against Stoke and Norwich, the latter ending in defeat on penalties after Stoke had been seen off in the same manner.

League form was mixed with plenty of draws early on, but there were notable last minute victories at home to MK Dons and at Shrewsbury's brand New Meadow. The win over the Dons was particularly amusing as Dale had trailed 2-1 going into injury time.

Although they exited the FA Cup at the first hurdle at Southend, Hill's men responded with a great run as Christmas approached. Three points at a sodden Accrington came with the hindrance of playing with ten men after David Perkins was sent-off, then days later Rotherham were soundly beaten 4-2 in our last-ever meeting at Millmoor.

The impressive sequence of results continued into the New Year with another win with less than the full complement at stadium:mk and a remarkable 4-3 success at Chesterfield. Striker Glenn Murray scored in that game and was sold to Brighton shortly afterwards, although he was effectively replaced by Rene Howe.

Results took a turn for the worse with seven defeats in ten games. However, in the midst of this Gary Jones broke the club's appearance record in a 4-0 win at Mansfield, when he also scored twice.

Chris Dagnall's return from injury and a nine-minute hat-trick against Rotherham kick-started a superb sequence of results until the end of the season. Going undefeated in the last ten games meant Dale entered the play-offs in confident mood.

The first leg at Darlington was witnessed by an impressive travelling support before the euphoria of a second leg victory on penalties. Tommy Lee's save from Jason Kennedy set up Ben Muirhead's 'one moment in time' and Dale were heading to Wembley.



Adam Le Fondre joined Dale on a permanent basis before the season started



Glenn Murray celebrates his final goal for the club in a 4-3 win at Chesterfield



A great sight as the Wembley screens replay Rory McArdle's opening goal



CROWN
GAS & POWER

PUTTING ALL OUR ENERGY INTO PROVIDING YOURS

www.crowngas.co.uk

Proud to Support Rochdale FC



Carrie Haworth
Team Leader

Terry Day
Director

Supplier of natural gas to businesses,
public sector and the construction industry

PUTTING ALL OUR ENERGY INTO PROVIDING YOURS

Crown Gas & Power Bury New Road, Heap Bridge, Bury BL9 7HY Tel: 0161 762 7744

DALE ON THE ROAD



GILLINGHAM v ROCHDALE

Saturday 18th April 2015 • Kick-Off 3.00pm

Sky Bet League 1

HOW TO GET THERE

BY ROAD



Take the M62 eastbound and then the A1 southbound, continuing to where the A1(M) joins the M25.

Follow the M25 clockwise, passing over the Dartford Crossing, before leaving at junction 2 (s/p London, Canterbury A2,

M2). Take the A2/M2 to junction 4, where you leave for the A278 towards Gillingham, going straight across two roundabouts.

At the third roundabout turn left onto the A2 towards Gillingham town centre. At the traffic light junction with the A231, turn right into Nelson Road and passing the small bus station, take a right turn into Gillingham Road. The ground is down on your right.

BY RAIL



Priestfield is about a ten minute walk from Gillingham railway station, which is served by trains from London Victoria (every 15 mins), Charing Cross (every 30 mins), St Pancras and Stratford International (both located on the same line, every 30 mins). It is worth noting that the quickest trains leave from St Pancras (journey time around 45 mins) and Stratford International (journey time 37 mins).

To get to the ground, turn left out of the station and follow the road until you come to a crossroads. Go straight on into Priestfield Road. The visitors' turnstiles are at the far end of this road.

Priestfield Stadium

Distance from
Spotland

252
miles



ME7 4DD

BY COACH



The club have put on a coach to Priestfield Stadium. It will leave Littleborough Railway Station (7.15am), Rochdale Town Hall (7.30am) and Spotland (8.00am). The fares are £27 (adults) and £24 (under-16). Seats can be booked in the Club Shop or by calling 0844 826 1907.

WHERE TO PARK

There is a 'Residents Only' parking scheme in operation around the ground, so if you want to street park it will mean driving a bit further away to do so. There is a cheap pay and display car park (£1.40 for four hours) on Railway Street near Gillingham railway station.

THE AWAY END

Dale fans will again be housed in the Brian Moore Stand, which we recall only too sadly from the play-offs in May 2009. Just in case anyone has forgotten, the stand is of the temporary variety, the type you would see around the 18th hole at the British Open Golf Championship. It is uncovered, so although Gillingham hand out free macs if it rains, still be prepared to get wet!

PRICES

Adults: £15

Over-65s: £15

Under-18s: £10

Under-12s: Free (When accompanied by a paying adult)

Tickets can be purchased CASH ONLY from the away turnstiles in Priestfield Road on the day of the game.



Junior Dale

Welcome again to the section in the programme for all our junior supporters. We hope young Dale fans are enjoying the challenge of the quiz questions and also finding out some things they didn't know about the club and football in general. We will publish anything else of interest to our young supporters so maybe you have a picture with your favourite Dale player; or have you drawn something connected to Dale; maybe you have written something for school about the club.

If you have anything you'd like us to feature on these pages, either leave it at the Club Shop (marked for the Editor's attention) or email it to rochdale_programme@hotmail.com.

SAY WHAT?!



English:
"CORNER KICK"



French:
"CORNER"



Spanish:
"SAQUE DE ESQUINA"



German:
"ECKSTOB"



Italian:
"CALCIO D'ANGOLO"

DALE DILEMMA

The names of two Dale players from the last five seasons have been mixed up. Who are the players?

1. FLING DEAF RINK

2. TARTAN MELON

ART ATTACK

Our artist has sketched a member of the Dale squad. Who is it?



FACT of the DAY

Rochdale's record win is 8-1 in a Third Division North game at home to Chesterfield in December 1926.

SPOT THE BALL

Where is the ball in this picture - A, B or C?



TRUE or FALSE

Decide if each of the three facts about Dale midfielder Michael Rose is either TRUE or FALSE

I started my career with Manchester City

True False

I made my Football League debut as a Yeovil player

True False

I was sent-off in last season's home game against Scunthorpe

True False

MATHS CLUB

Research the number of league goals these players scored last season to work out this calculation:



MAKE 'EM LAUGH!



What lights up a football stadium?
A football match


Answers on page 71



— Revolution Sport with **RRG Skoda** every Saturday 2-6pm

www.therevolution962.com

 /therevolution962
 @rev962

 Available on the
App Store

revolution96.2

Made for Oldham, Rochdale and Tameside

LEAGUE ONE ROUND-UP



Jason Birch brings us an irreverent look at life in League One ...

MK Dons' striker Will Grigg has found top form as the season nears completion and is making Dons' fans believe they can still achieve the second automatic promotion spot in League One.

The 23-year-old is currently on a season-long loan from Brentford and has scored six goals in three consecutive league games prior to the weekend, taking his tally for the season to 19 goals.

Not surprisingly, Dons' manager Karl Robinson wants to make Grigg's move permanent in the summer, recently describing the Northern Ireland international as "incredible".

With only four league games remaining, Robinson will be hoping to see more of Grigg's trademark, but enigmatic goal celebration. When he scores, Grigg (pictured) finds the nearest empty stand and celebrates in front of it!



When asked why he does it, Grigg remained coy and just stated that it harks back to his playing days at Walsall.

Yeovil have appointed Paul Sturrock as their new manager after he walked out on his advisory position at Torquay only four days into the job.

The former Plymouth and Southampton chief had been out of work since leaving Southend in 2013, before his very brief spell at Torquay over the Easter weekend.

He departed his job at the Conference club having been offered this role with Yeovil, which will see the current interim manager, Terry Skiverton, revert to assistant manager.

For any readers thinking Torquay fans may be feeling shell-shocked at Sturrock's swift exit, they have experienced worse!

When Leroy Rosenior was appointed manager of The Gulls in 2007, he found himself sacked after 10 minutes!

As he was signing his contract, the club was actually being sold to a local consortium and before Leroy had even had the chance to leave the boardroom after putting pen-to-paper, the club's new owners decided they wanted their own man and Rosenior was immediately shown the door!

Relegation-threatened Notts County will be hoping midfielder Liam Noble can find the right balance between tenacity and temper over their remaining fixtures.

The 23-year-old's brand of fiery play has seen him pick up more cards than any other player so far this season. Noble's 13 yellow cards and three red cards have resulted in a number of suspensions and picking-up two more yellows will result in a further three-match ban.

Despite his discipline record Noble (pictured) has become a fans' favourite in what has been his first season at Meadow Lane since joining from Carlisle last summer and is considered a key player for The Magpies.



TONIGHT'S OTHER FIXTURES

Sky Bet League 1

Bradford C v Bristol C
Chesterfield v Colchester U
Coventry C v Oldham A
Fleetwood T v MK Dons
Leyton Orient v Doncaster R
Notts C v Barnsley

Peterborough U v Crewe A
Preston NE v Gillingham
Scunthorpe U v Port Vale
Walsall v Crawley T
Yeovil T v Sheffield U

JUNIOR DALE ANSWERS (from pages 68 & 69)

DALE DILEMMA: Frank Fielding & Neal Trotman

ART ATTACK: Stephen Dawson

SPOT THE BALL: B


TRUE or FALSE: Michael started his career and was sent-off in the away game at Scunthorpe, but he did make his Football League debut with Yeovil

MATHS CLUB: $5 + 4 - 6 = 3$



UNDISPUTED **KING** OF TRAINERS

JDSports.CO.UK

Available at your local  Yorkshire St

INSTORE | ONLINE | JD APP
JDSports.CO.UK



NEXT AT SPOTLAND



ROCHDALE
v
LEYTON ORIENT
TUESDAY 21ST APRIL 2015
KICK-OFF 7.45PM
SKY BET LEAGUE 1

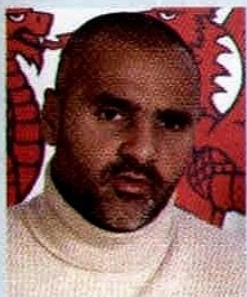
The final three weeks of the season are going to seriously test the nerves of Leyton Orient fans.

A dramatic comeback from 3-1 down to earn a 3-3 draw in the home encounter with Gillingham on Easter Monday lifted The O's out of the bottom four and above Crewe, who they visited on Saturday in a relegation six-pointer.

They entertain Doncaster tonight, but end the season with their trip to Spotland surrounded by games against MK Dons, Sheffield United and Swindon.

It's an extremely difficult run-in and with manager Fabio Liverani recently targeting 53 points for survival, his team may need to pick up something from the promotion-chasing sides if they are to remain in League One.

THE BOSS Fabio Liverani



Fabio was appointed manager at the Matchroom Stadium in December, replacing Mauro Milanese, who had been at the helm for only eight matches. The 38-year-old's only previous managerial experience came at Genoa, but he was dismissed after winning just one of his seven games in charge.

PRICES:

Main Stand: Adults £20, Senior Citizens/Young Persons £14, Juniors £5

TDS Stand: Adults £18, Senior Citizens/Young Persons £12, Juniors £5

Sandy Lane: Adults £15, Senior Citizens/Young Persons £10, Juniors £5

THEIR RECORD HERE

Leyton Orient have visited Spotland on 18 previous occasions, winning eight, drawing two and losing eight.

Their best wins here were 4-1 successes in May 1986 and March 2000, while The O's worst results at Spotland came in April 2002 and April 2004 when they went down to 3-0 defeats.

THEIR LAST VISIT

The O's were comfortable 2-0 winners when they were last at Spotland in October 2011. Jimmy Smith gave the visitors an early lead, with David Mooney doubling the advantage after the interval to increase the pressure on Dale boss Steve Eyre.



**ONE TO
WATCH**

CHRIS DAGNALL

The former Dale striker has been in good form for Leyton Orient this season, in particular when he scored six goals in seven appearances either side of the New Year. However, 'Daggers' still has some way to go to reach the 60 goals he netted for Dale after joining us from Tranmere in January 2006.



LOST IN TIME

Swindon were chasing what would have been a club record fifth consecutive away win when they arrived at Spotland in March 1986. The Robins, top of the table, were also ten points clear of fifth place and looking set for promotion under Lou Macari's management. They were given their sternest test at Spotland and a highly dubious 77th minute penalty from Colin Gordon was followed by Charlie Henry's winner two minutes later to overturn Ronnie Moore's earlier opener for Dale. Pictured we see Ian McMahon and current QPR manager Chris Ramsey racing towards the Sandy Lane in the second half of the game.

DATE: Saturday 8th March 1986 **VENUE:** Spotland **MATCH & SCORE:** Rochdale 1, Swindon Town 2 **COMPETITION:** Canon League Division Four



sky BET

**WIN
£250,000
FOR YOUR
CLUB**

**SUPPORT
ROCHDALE WITH
US THIS SEASON**



ARE YOU IN?
skybet.com/rochdale

SQUAD CHECK



**Rochdale
AFC**



**Swindon
Town**

PLAYED
Yellow
Red

	1	Josh Lillis (GK)
	2	Joe Rafferty
	3	Rhys Bennett
	4	Sean McGinty
	5	Ashley Eastham
	6	Olly Lancashire
	7	Peter Vincenti
	8	Matty Lund
	9	Calvin Andrew
	10	Febian Brandy
	11	Reuben Noble-Lazarus
	12	Stephen Dawson
	14	Bastien Hery
	17	Scott Tanser
	18	Jack Muldoon
	19	Jamie Jones (GK)
	20	Brian Barry-Murphy
	21	Jonathan Diba Musangu (GK)
	23	Steve Collis (GK)
	24	Jamie Allen
	25	Michael Rose
	26	Joel Logan
	27	Andy Cannon
	28	Callum Camps
	31	Nyal Bell
	32	Billy Hasler-Cregg
	33	Tom Kennedy
	34	James Hooper
	39	Joe Bunney
	40	Ian Henderson

PLAYED
Yellow
Red

	1	Wes Foderingham (GK)
	2	Nathan Thompson
	3	Nathan Byrne
	4	Massimo Luongo
	5	Jack Stephens
	6	Jordan Turnbull
	7	Ben Gladwin
	8	Yaser Kasim
	9	Michael Smith
	10	Andy Williams
	14	John Swift
	15	Harry Toffolo
	16	Connor Waldon
	18	George Barker
	19	Louis Thompson
	20	Jonathan Obika
	23	Jack Barthram
	24	Jermaine Hylton
	25	Tyrell Belford (GK)
	26	Anton Rodgers
	29	Raphael Branco
	36	Sam Ricketts
	37	Cameron Belford (GK)

Referee: Mr NS Miller (County Durham)

Assistants: Mr T Peart (North Yorkshire), Mr N Smith (Derbyshire)

Fourth Official: Mr RL Johnson (Manchester)

THE VOICE OF SPOTLAND

Editor: Mark Wilbraham

Contributors: Jason Birch, David Chaffey, Leighanne Coyle, Keith Hicks, Iain Johnstone, Matt Smith, Dale Supporters Trust, Scrutator

Photography: Daniel Youngs (DY Sporting Photos), Tony Greenwood, Matt McNulty

Design: Peter Cunliffe **Print:** EWS Colourprint

Email: rochdale_programme@hotmail.com

Twitter: @daleprogramme

The views expressed in The Voice of Spotland are not necessarily those of the Editor or the club